

\$0 - 12228 118 Avenue, Edmonton

MLS® #E4415140

\$0

0 Bedroom, 0.00 Bathroom,
Retail on 0.00 Acres

Prince Charles, Edmonton, AB

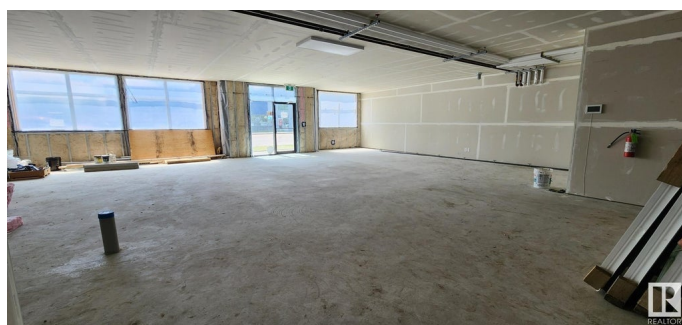
FOR LEASE: HIGH-TRAFFIC RETAIL SPACE

â€“ Discover the perfect location for your business with this 2,015 sq. ft. retail store featuring 118 Avenue frontage and digital signage for unbeatable visibility and advertising potential. Surrounded by thriving businesses like McDonald's, St. John Ambulance, a bustling daycare, and a popular Pizza & Donair shop, this space guarantees steady foot traffic and a loyal customer base. Designed for versatility, itâ€™s ideal for retail, service businesses, or community use, with ample rear and street parking ensuring seamless convenience for tenants and visitors alike. Strategically located just minutes from the vibrant 124 Street district, the rapidly growing Blatchford development, and downtown Edmonton, this space positions your business for success in a booming area. Opportunities like this are rare and highly sought afterâ€”secure your spot today and watch your business thrive!

Built in 2022

Essential Information

MLS® #	E4415140
Bathrooms	0.00
Acres	0.00
Year Built	2022



Type	Retail
Status	Active

Community Information

Address	12228 118 Avenue
Area	Edmonton
Subdivision	Prince Charles
City	Edmonton
County	ALBERTA
Province	AB
Postal Code	T5L 2K1

Exterior

Exterior	Concrete, Steel Frame
Construction	Concrete, Steel Frame

Additional Information

Date Listed	December 2nd, 2024
Days on Market	150
Zoning	Zone 04

DATA IS DEEMED RELIABLE BUT IS NOT GUARANTEED ACCURATE BY THE REALTORS® ASSOCIATION OF EDMONTON. COPYRIGHT 2025 BY THE REALTORS® ASSOCIATION OF EDMONTON. ALL RIGHTS RESERVED.Trademarks are owned or controlled by the Canadian Real Estate Association (CREA) and identify real estate professionals who are members of CREA (REALTOR®, REALTORS®) and/or the quality of services they provide (MLS®, Multiple Listing Service®)

Listing information last updated on May 1st, 2025 at 8:32pm MDT