

\$499,900 - Rr 222 Highway 14, Rural Strathcona County

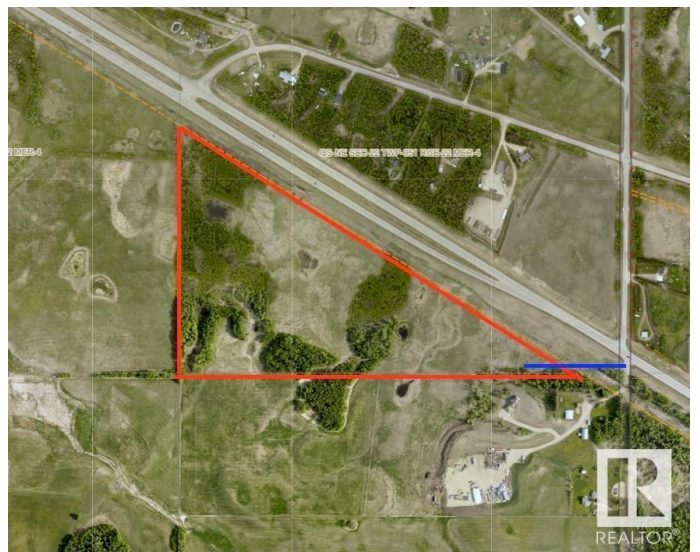
MLS® #E4418832

\$499,900

0 Bedroom, 0.00 Bathroom,
Rural on 43.29 Acres

None, Rural Strathcona County, AB

43.29 Acres right on Highway 14. Perfect for storage, a trucking yard or residential country retreat. This beautiful parcel of land in Strathcona County offers peaceful country living and convenient urban amenities nearby. Lots of potential for different uses including the opportunity to use it as a commercial yard right on the highway 14 paved as four lanes. It could also be used as a residential property to build a home and use the rest of the land for storage or a trucking business under county guidance. The perimeter is bordered by trees on all sides creating a private piece of land. Flat site with many options for building locations. This property can be used for agricultural as well, it is fully fenced for cattle or horses. Excellent investment property for future developments. Amazing location, 5 min to Sherwood Park, just steps to Mcffaden Lake and South Cooking Lake is just around the corner, just east of Highway 21 on the divided portion of Highway 14.



Essential Information

MLS® #	E4418832
Price	\$499,900
Bathrooms	0.00
Acres	43.29
Type	Rural

Sub-Type	Vacant Lot/Land
Status	Active

Community Information

Address	Rr 222 Highway 14
Area	Rural Strathcona County
Subdivision	None
City	Rural Strathcona County
County	ALBERTA
Province	AB
Postal Code	T8B 3C9

Exterior

Exterior Features	Treed Lot
-------------------	-----------

Additional Information

Date Listed	January 22nd, 2025
Days on Market	101
Zoning	Zone 80

DATA IS DEEMED RELIABLE BUT IS NOT GUARANTEED ACCURATE BY THE REALTORS® ASSOCIATION OF EDMONTON. COPYRIGHT 2025 BY THE REALTORS® ASSOCIATION OF EDMONTON. ALL RIGHTS RESERVED. Trademarks are owned or controlled by the Canadian Real Estate Association (CREA) and identify real estate professionals who are members of CREA (REALTOR®, REALTORS®) and/or the quality of services they provide (MLS®, Multiple Listing Service®)

Listing information last updated on May 3rd, 2025 at 2:17am MDT