

\$0 - 202 9411 63 Avenue, Edmonton

MLS® #E4421548

\$0

0 Bedroom, 0.00 Bathroom,
Office on 0.00 Acres

Rosedale Industrial, Edmonton, AB

2390 Square feet of 2nd floor nicely developed office space with ample parking and 7 outside offices with natural light, private waiting area and private reception area, lunch room and boardroom. Highly secure space with available cameras and alarms professionally installed by Price Langevin Security Consultants. Part of a 20,000 square foot building with 6 professional tenants.

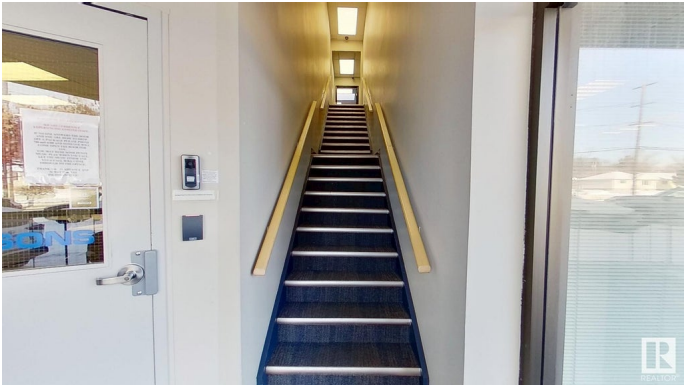
Built in 1979

Essential Information

MLS® #	E4421548
Bathrooms	0.00
Acres	0.00
Year Built	1979
Type	Office
Status	Active

Community Information

Address	202 9411 63 Avenue
Area	Edmonton
Subdivision	Rosedale Industrial
City	Edmonton
County	ALBERTA
Province	AB
Postal Code	T6E 0G2



Exterior

Exterior	Block
Construction	Block

Additional Information

Date Listed	February 14th, 2025
Days on Market	172
Zoning	Zone 41

DATA IS DEEMED RELIABLE BUT IS NOT GUARANTEED ACCURATE BY THE REALTORS® ASSOCIATION OF EDMONTON. COPYRIGHT 2025 BY THE REALTORS® ASSOCIATION OF EDMONTON. ALL RIGHTS RESERVED.Trademarks are owned or controlled by the Canadian Real Estate Association (CREA) and identify real estate professionals who are members of CREA (REALTOR®, REALTORS®) and/or the quality of services they provide (MLS®, Multiple Listing Service®)

Listing information last updated on August 5th, 2025 at 6:47am MDT