

\$765,000 - 1103 11969 Jasper Avenue, Edmonton

MLS® #E4427806

\$765,000

2 Bedroom, 2.50 Bathroom, 1,539 sqft

Condo / Townhouse on 0.00 Acres

Wåhåwåntåwin, Edmonton, AB

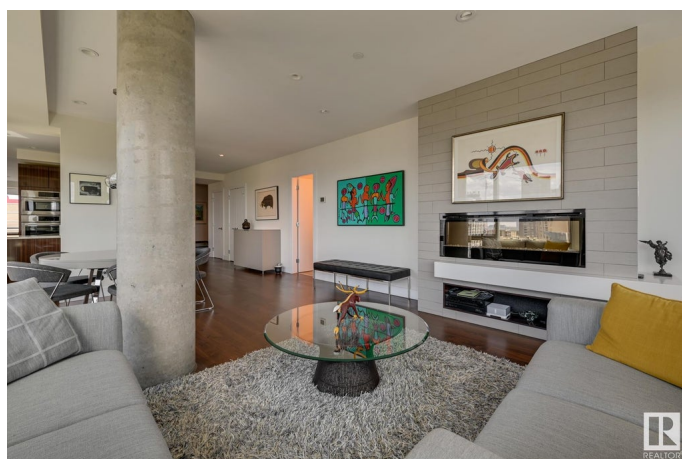
Luxury Living at The Pearl Tower â€œ
Unmatched Elegance & Views. Experience sophistication at The Pearl Tower, where contemporary design meets luxury. Enjoy panoramic river valley views and stunning sunsets from two southwest balconies, plus a 3rd north-facing balcony for added space. The open-concept layout is bathed in natural light, featuring a grand double-door entry and custom high-end finishes throughout. Every detail, from premium cabinetry and flooring to top-tier appliances, has been thoughtfully designed. With two living spaces, both with fireplaces and breathtaking views, this home is perfect for relaxation and entertaining. The primary suite boasts a walk-in closet and spa-like ensuite. A versatile second bedroom easily converts from an office to a guest suite with its own ensuite.* In-suite laundry & storage * TWO TITLED PARKING STALLS (3rd available separately) * 24-hour concierge, gym, party room & more * Prime walkable location near downtown & river valley. This is urban luxury at its finest!

Built in 2015

Essential Information

MLS® # E4427806

Price \$765,000



Bedrooms	2
Bathrooms	2.50
Full Baths	2
Half Baths	1
Square Footage	1,539
Acres	0.00
Year Built	2015
Type	Condo / Townhouse
Sub-Type	Apartment High Rise
Style	Single Level Apartment
Status	Active

Community Information

Address	1103 11969 Jasper Avenue
Area	Edmonton
Subdivision	W&hkw&nt&win
City	Edmonton
County	ALBERTA
Province	AB
Postal Code	T5K 0P1

Amenities

Amenities	Air Conditioner, Car Wash, Closet Organizers, Deck, Exercise Room, Security Door
Parking Spaces	2
Parking	Underground

Interior

Interior Features	ensuite bathroom
Appliances	Dishwasher-Built-In, Dryer, Hood Fan, Oven-Built-In, Refrigerator, Stove-Countertop Electric, Washer
Heating	Heat Pump, Natural Gas
# of Stories	36
Stories	1
Has Basement	Yes
Basement	None, No Basement

Exterior

Exterior	Concrete
----------	----------

Exterior Features	Golf Nearby, Public Transportation, River Valley View, Schools, Shopping Nearby, View City, View Downtown
Roof	EPDM Membrane
Construction	Concrete
Foundation	Concrete Perimeter

Additional Information

Date Listed	March 27th, 2025
Days on Market	35
Zoning	Zone 12
Condo Fee	\$1,627

DATA IS DEEMED RELIABLE BUT IS NOT GUARANTEED ACCURATE BY THE REALTORS® ASSOCIATION OF EDMONTON. COPYRIGHT 2025 BY THE REALTORS® ASSOCIATION OF EDMONTON. ALL RIGHTS RESERVED.Trademarks are owned or controlled by the Canadian Real Estate Association (CREA) and identify real estate professionals who are members of CREA (REALTOR®, REALTORS®) and/or the quality of services they provide (MLS®, Multiple Listing Service®)

Listing information last updated on May 1st, 2025 at 5:17pm MDT