

\$2,100,000 - 9011 138 Street, Edmonton

MLS® #E4431960

\$2,100,000

4 Bedroom, 4.00 Bathroom, 2,910 sqft

Single Family on 0.00 Acres

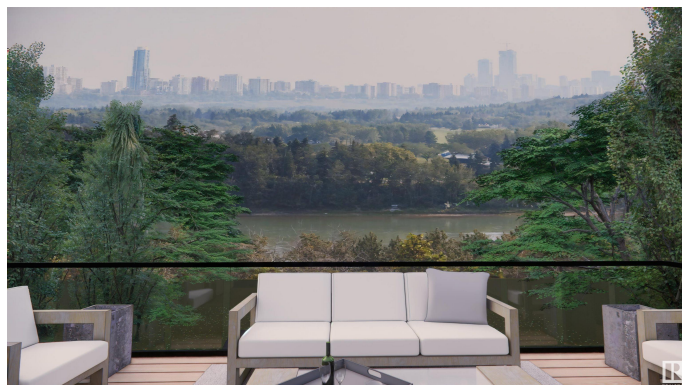
Parkview, Edmonton, AB

Luxury Living in Valleyview This stunning custom-built home offers over 2,900 sq ft above grade in one of Edmonton's most coveted communities. Featuring 4 bedrooms, 3 full baths, 2 half baths, and an oversized double attached garage connected by a breezeway, complete with car lift capability. An elevator provides convenient access all the way to the rooftop patio, where you'll enjoy gorgeous and unobstructed city and River Valley views. The fully finished basement includes a home gym and a hidden cantina/cold room, while the main floor showcases upscale finishes, a spacious mud room, and a layout designed for both comfort and style. There's still time to customize select finishes depending on the stage of construction, making this luxury home uniquely yours. Modern living, exceptional craftsmanship, and a premier location—this is Parkview at its finest.

Built in 2024

Essential Information

MLS® #	E4431960
Price	\$2,100,000
Bedrooms	4
Bathrooms	4.00
Full Baths	3



Half Baths	2
Square Footage	2,910
Acres	0.00
Year Built	2024
Type	Single Family
Sub-Type	Detached Single Family
Style	2 Storey
Status	Active

Community Information

Address	9011 138 Street
Area	Edmonton
Subdivision	Parkview
City	Edmonton
County	ALBERTA
Province	AB
Postal Code	T5R 0E5

Amenities

Amenities	On Street Parking, Air Conditioner, Bar, Ceiling 10 ft., Ceiling 9 ft., Closet Organizers, Deck, Detectors Smoke, Exercise Room, Wet Bar, Infill Property, HRV System, Natural Gas BBQ Hookup, Rooftop Deck/Patio
Parking Spaces	2
Parking	Double Garage Attached, Over Sized

Interior

Interior Features	ensuite bathroom
Appliances	Dryer, Hood Fan, Oven-Built-In, Stove-Countertop Gas, Washer, Wine/Beverage Cooler, See Remarks, Refrigerators-Two, Dishwasher-Two, Garage Heater
Heating	Forced Air-1, Natural Gas
Fireplace	Yes
Fireplaces	Glass Door
Stories	4
Has Basement	Yes
Basement	Full, Finished

Exterior

Exterior	Wood, Vinyl
----------	-------------

Exterior Features	Playground Nearby, Ravine View, River Valley View, River View, Schools, Shopping Nearby, View City, View Downtown
Roof	Asphalt Shingles
Construction	Wood, Vinyl
Foundation	Concrete Perimeter

Additional Information

Date Listed	April 21st, 2025
Days on Market	104
Zoning	Zone 10

DATA IS DEEMED RELIABLE BUT IS NOT GUARANTEED ACCURATE BY THE REALTORS® ASSOCIATION OF EDMONTON. COPYRIGHT 2025 BY THE REALTORS® ASSOCIATION OF EDMONTON. ALL RIGHTS RESERVED.Trademarks are owned or controlled by the Canadian Real Estate Association (CREA) and identify real estate professionals who are members of CREA (REALTOR®, REALTORS®) and/or the quality of services they provide (MLS®, Multiple Listing Service®)

Listing information last updated on August 3rd, 2025 at 2:17am MDT