

Courtesy Of Michel Estephan Of RE/MAX Elite

\$529,900 - 10103 172 Avenue, Edmonton

MLS® #E4433202

\$529,900

5 Bedroom, 3.00 Bathroom, 1,176 sqft
Single Family on 0.00 Acres

Baturyn, Edmonton, AB

Beautifully renovated bungalow featuring a fully legal basement suite! The main level offers three spacious bedrooms and two full bathrooms, while the lower suite includes two bedrooms and one full bathroom – perfect for extended family living or rental opportunities. Everything in the home is brand new and legally permitted. This well-maintained property is ideally located in Edmonton’s north end, providing easy access to public transit, Anthony Henday Drive, and an array of nearby shops, schools, and playgrounds. Nestled in an established, family-friendly community, this home is an excellent choice for a growing family or investor. Additional features include an oversized detached double garage offering plenty of space and storage. All appliances and window coverings also included

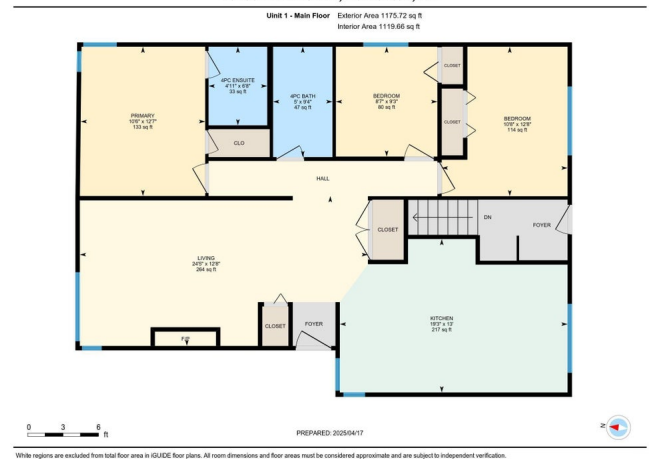
Built in 1979

Essential Information

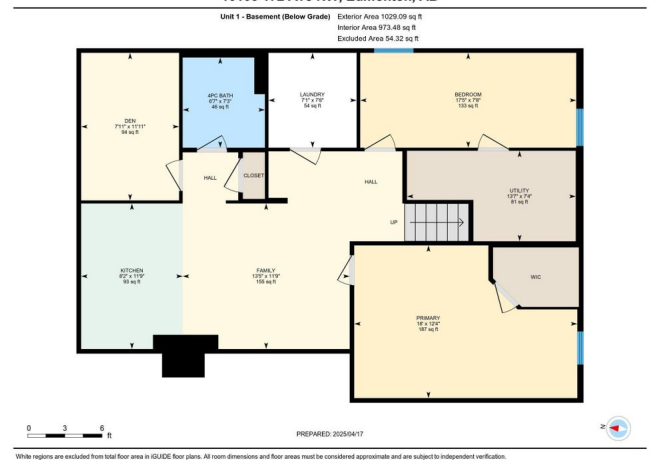
MLS® #	E4433202
Price	\$529,900
Bedrooms	5
Bathrooms	3.00
Full Baths	3
Square Footage	1,176
Acres	0.00



10103 172 Ave NW, Edmonton, AB



10103 172 Ave NW, Edmonton, AB



Year Built	1979
Type	Single Family
Sub-Type	Detached Single Family
Style	Bungalow
Status	Active

Community Information

Address	10103 172 Avenue
Area	Edmonton
Subdivision	Baturyn
City	Edmonton
County	ALBERTA
Province	AB
Postal Code	T5X 4V7

Amenities

Amenities	See Remarks
Parking Spaces	4
Parking	Double Garage Detached

Interior

Interior Features	ensuite bathroom
Appliances	Window Coverings, Dryer-Two, Refrigerators-Two, Stoves-Two, Washers-Two, Dishwasher-Two, Microwave Hood Fan-Two
Heating	Forced Air-1, Natural Gas
Fireplace	Yes
Fireplaces	Brick Facing, Mantel
Stories	2
Has Suite	Yes
Has Basement	Yes
Basement	Full, Finished

Exterior

Exterior	Wood, Stucco
Exterior Features	Back Lane, Fenced, Paved Lane, Playground Nearby, Public Transportation, Schools, Shopping Nearby, See Remarks
Roof	Asphalt Shingles
Construction	Wood, Stucco
Foundation	Concrete Perimeter

Additional Information

Date Listed April 28th, 2025

Days on Market 3

Zoning Zone 27

DATA IS DEEMED RELIABLE BUT IS NOT GUARANTEED ACCURATE BY THE REALTORS® ASSOCIATION OF EDMONTON. COPYRIGHT 2025 BY THE REALTORS® ASSOCIATION OF EDMONTON. ALL RIGHTS RESERVED. Trademarks are owned or controlled by the Canadian Real Estate Association (CREA) and identify real estate professionals who are members of CREA (REALTOR®, REALTORS®) and/or the quality of services they provide (MLS®, Multiple Listing Service®)

Listing information last updated on May 1st, 2025 at 5:47pm MDT