

# \$599,900 - 2040 210 St, Edmonton

MLS® #E4433986

**\$599,900**

5 Bedroom, 4.00 Bathroom, 1,906 sqft  
Single Family on 0.00 Acres

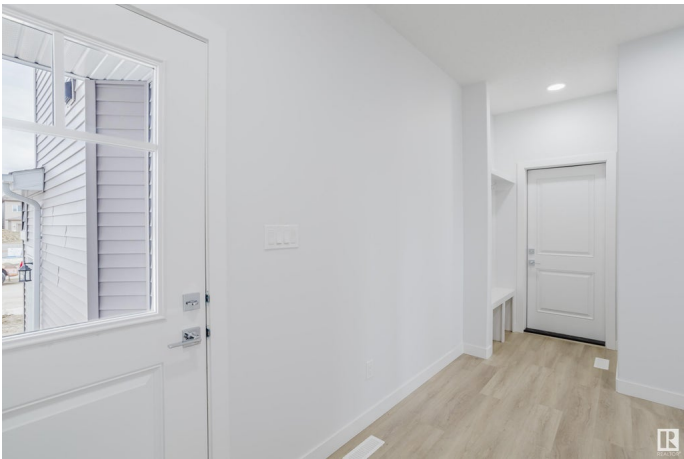
Stillwater, Edmonton, AB

BRAND NEW HOME IN VERGE, STILLWATER! LEGAL 2 BEDROOM BASEMENT SUITE with Private Side Entrance! This home features 9ft Ceilings & an Open concept floor plan. The stylized Living / Dining Area has an Ultra Modern Fireplace and In-Style Vinyl Plank Flooring. The modern two tone kitchen comes complete with ample storage and a large island with a white quartz countertop! Upstairs you'll find 3 LARGE bedrooms including a luxurious primary bedroom with a walk-in closet and ensuite, spacious laundry with a sink and a versatile bonus room. The 2 Bedroom Basement Suite features its own laundry and a full sized kitchen.

Built in 2025

## Essential Information

|                |               |
|----------------|---------------|
| MLS® #         | E4433986      |
| Price          | \$599,900     |
| Bedrooms       | 5             |
| Bathrooms      | 4.00          |
| Full Baths     | 4             |
| Square Footage | 1,906         |
| Acres          | 0.00          |
| Year Built     | 2025          |
| Type           | Single Family |



|          |                        |
|----------|------------------------|
| Sub-Type | Detached Single Family |
| Style    | 2 Storey               |
| Status   | Active                 |

### Community Information

|             |             |
|-------------|-------------|
| Address     | 2040 210 St |
| Area        | Edmonton    |
| Subdivision | Stillwater  |
| City        | Edmonton    |
| County      | ALBERTA     |
| Province    | AB          |
| Postal Code | T6M 3H6     |

### Amenities

|           |   |
|-----------|---|
| Amenities | Ceiling 9 ft., Detectors Smoke, Exterior Walls- 2"x6", Hot Water Tankless, No Animal Home, No Smoking Home, Vinyl Windows, Natural Gas Stove Hookup |
| Parking   | Double Garage Attached  |

### Interior

|                   |   |
|-------------------|---|
| Interior Features | ensuite bathroom                        |
| Appliances        | Garage Control, Garage Opener, Hood Fan |
| Heating           | Forced Air-2, Natural Gas               |
| Fireplace         | Yes                                     |
| Fireplaces        | Remote Control                          |
| Stories           | 3                                       |
| Has Suite         | Yes                                     |
| Has Basement      | Yes                                     |
| Basement          | Full, Finished                          |

### Exterior

|                   |  |
|-------------------|--|
| Exterior          | Wood, Stone, Vinyl   |
| Exterior Features | Playground Nearby, Public Transportation, Schools, Shopping Nearby |
| Roof              | Asphalt Shingles   |
| Construction      | Wood, Stone, Vinyl   |
| Foundation        | Concrete Perimeter   |

### Additional Information

|             |               |
|-------------|---------------|
| Date Listed | May 1st, 2025 |
|-------------|---------------|

Days on Market 10

Zoning Zone 57

DATA IS DEEMED RELIABLE BUT IS NOT GUARANTEED ACCURATE BY THE REALTORS® ASSOCIATION OF EDMONTON. COPYRIGHT 2025 BY THE REALTORS® ASSOCIATION OF EDMONTON. ALL RIGHTS RESERVED. Trademarks are owned or controlled by the Canadian Real Estate Association (CREA) and identify real estate professionals who are members of CREA (REALTOR®, REALTORS®) and/or the quality of services they provide (MLS®, Multiple Listing Service®)

Listing information last updated on May 11th, 2025 at 7:47pm MDT