

\$430,000 - 5385 Crabapple Loop, Edmonton

MLS® #E4435081

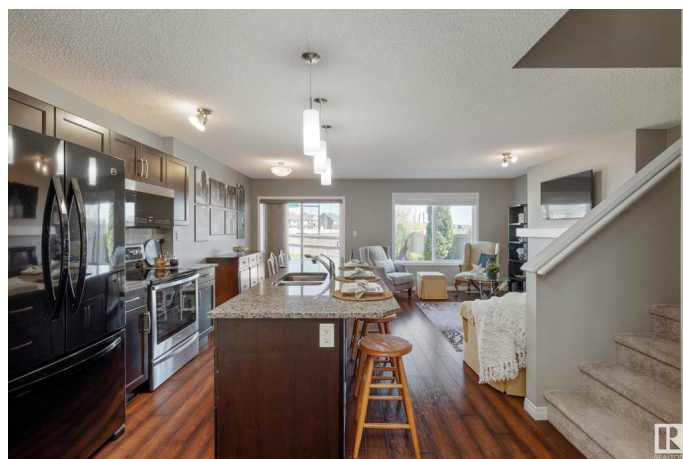
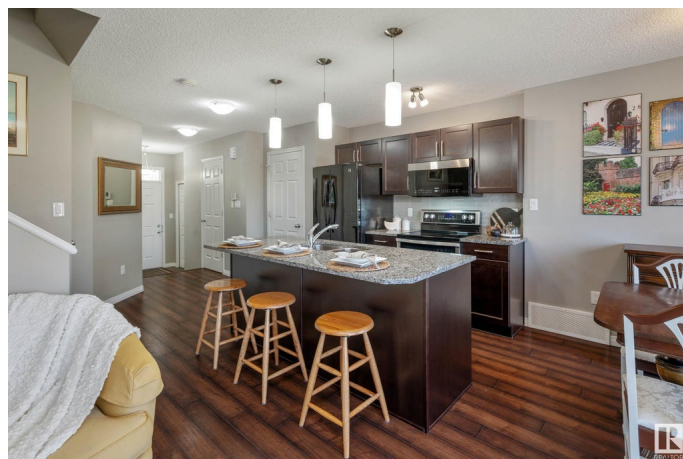
\$430,000

3 Bedroom, 2.50 Bathroom, 1,429 sqft

Single Family on 0.00 Acres

The Orchards At Ellerslie, Edmonton, AB

IMMACULATE half-duplex in the heart of THE ORCHARDS is ready to welcome your family! Steps away from schools & all local amenities makes this a PERFECT location. Plus, get involved with The Orchards Club House & watch your family "œblossom" this season. Charming curb appeal situated on private CUL-DE-SAC with beautiful professional landscaping on massive 518m2 lot. Fully fenced back yard is a DREAM with its 2 tiered-deck, lush gardens & abundance of space for kids to play. Welcoming foyer w/closet & man-door to single attached garage transitions to open concept great room showcasing rich dark flooring, electric F/P & desired colour pallet throughout. Great entertaining kitchen features eat-on centre island, quartz countertops, pantry, all appliances & great backyard views off dinette. Bright upper-level owners suite is complimented by private 4 pc ensuite & large WIC. 2 additional jr. rooms, laundry room w/shelving & 4pc bath. Unfinished basement awaits your personal touch! Central A/C!check!!! MUST SEE!!!



Built in 2013

Essential Information

MLS® # E4435081

Price \$430,000

Bedrooms	3
Bathrooms	2.50
Full Baths	2
Half Baths	1
Square Footage	1,429
Acres	0.00
Year Built	2013
Type	Single Family
Sub-Type	Half Duplex
Style	2 Storey
Status	Active

Community Information

Address	5385 Crabapple Loop
Area	Edmonton
Subdivision	The Orchards At Ellerslie
City	Edmonton
County	ALBERTA
Province	AB
Postal Code	T6X 1S5

Amenities

Amenities	Air Conditioner, Ceiling 9 ft., Deck, Detectors Smoke, Television Connection, Vinyl Windows
Parking Spaces	2
Parking	Front Drive Access, Single Garage Attached

Interior

Interior Features	ensuite bathroom
Appliances	Air Conditioning-Central, Dishwasher-Built-In, Dryer, Garage Control, Garage Opener, Microwave Hood Fan, Refrigerator, Stove-Electric, Washer, Window Coverings
Heating	Forced Air-1, Natural Gas
Fireplace	Yes
Fireplaces	Insert, Mantel
Stories	2
Has Basement	Yes
Basement	Full, Unfinished

Exterior

Exterior	Wood, Stone, Vinyl
Exterior Features	Cul-De-Sac, Landscaped, No Back Lane, Picnic Area, Playground Nearby, Public Transportation, Recreation Use, Schools, Shopping Nearby
Roof	Asphalt Shingles
Construction	Wood, Stone, Vinyl
Foundation	Concrete Perimeter

School Information

Elementary	JAN REIMER SCHOOL
Middle	JAN REIMER SCHOOL
High	J. PERCY PAGE SCHOOL

Additional Information

Date Listed	May 8th, 2025
Days on Market	1
Zoning	Zone 53
HOA Fees	425
HOA Fees Freq.	Annually

DATA IS DEEMED RELIABLE BUT IS NOT GUARANTEED ACCURATE BY THE REALTORS® ASSOCIATION OF EDMONTON. COPYRIGHT 2025 BY THE REALTORS® ASSOCIATION OF EDMONTON. ALL RIGHTS RESERVED. Trademarks are owned or controlled by the Canadian Real Estate Association (CREA) and identify real estate professionals who are members of CREA (REALTOR®, REALTORS®) and/or the quality of services they provide (MLS®, Multiple Listing Service®)

Listing information last updated on May 9th, 2025 at 7:17pm MDT