

\$1,189,000 - 4003 Ginsburg Crescent, Edmonton

MLS® #E4435686

\$1,189,000

3 Bedroom, 3.50 Bathroom, 3,218 sqft

Single Family on 0.00 Acres

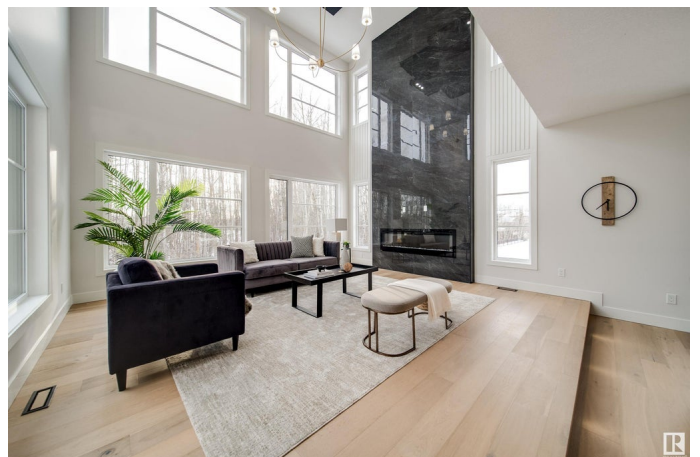
Granville (Edmonton), Edmonton, AB

Welcome to this stunning Active Homes build in Granville Estates, ft. a WALKOUT BASEMENT w/ SW yard backing a tranquil TREELINE! Boasting over 3200 sqft, this home offers luxurious finishes & UPGRADES, including 9 ft ceilings, custom 8 ft doors, tankless HWT, a beautiful archway leading to the mudroom and TRIPLE CAR GARAGE. The main floor is an entertainerâ€™s dream w/a chef inspired kitchen ft. QUARTZ counters, a massive island, a BUTLER'S PANTRY & abundant cabinet & counter space to meet all your culinary needs. The bright living & dining areas are filled w/ natural light, offering gorgeous treeline VIEWS from the deck. Upstairs the spacious primary suite boasts a spa like ensuite w/WIC, flowing directly into the laundry room. Additional 2 bdrms, each w/access to their own full bath, + a versatile bonus rm complete this thoughtfully designed home. An unfinished bsmnt awaits your personal touch. Situated near schools, shopping, & amenities, this property seamlessly blends luxury, comfort, & functionality.

Built in 2024

Essential Information

| | |
|--------|-------------|
| MLS® # | E4435686 |
| Price | \$1,189,000 |



| | |
|----------------|------------------------|
| Bedrooms | 3 |
| Bathrooms | 3.50 |
| Full Baths | 3 |
| Half Baths | 1 |
| Square Footage | 3,218 |
| Acres | 0.00 |
| Year Built | 2024 |
| Type | Single Family |
| Sub-Type | Detached Single Family |
| Style | 2 Storey |
| Status | Active |

Community Information

| | |
|-------------|------------------------|
| Address | 4003 Ginsburg Crescent |
| Area | Edmonton |
| Subdivision | Granville (Edmonton) |
| City | Edmonton |
| County | ALBERTA |
| Province | AB |
| Postal Code | T5T 4V2 |

Amenities

| | |
|-----------|--|
| Amenities | On Street Parking, Ceiling 9 ft., Closet Organizers, Deck, Hot Water Tankless, No Animal Home, Walkout Basement, See Remarks, 9 ft. Basement Ceiling |
| Parking | Triple Garage Attached |

Interior

| | |
|-------------------|---------------------------|
| Interior Features | ensuite bathroom |
| Appliances | See Remarks |
| Heating | Forced Air-1, Natural Gas |
| Fireplace | Yes |
| Fireplaces | Insert, Tile Surround |
| Stories | 2 |
| Has Basement | Yes |
| Basement | Full, Unfinished |

Exterior

| | |
|----------|----------------------------|
| Exterior | Wood, Stone, Stucco, Vinyl |
|----------|----------------------------|

| | |
|-------------------|---|
| Exterior Features | Golf Nearby, No Back Lane, Playground Nearby, Private Setting, Treed Lot, See Remarks, Partially Fenced |
| Roof | Asphalt Shingles |
| Construction | Wood, Stone, Stucco, Vinyl |
| Foundation | Concrete Perimeter |

Additional Information

| | |
|----------------|---------------|
| Date Listed | May 9th, 2025 |
| Days on Market | 86 |
| Zoning | Zone 58 |

DATA IS DEEMED RELIABLE BUT IS NOT GUARANTEED ACCURATE BY THE REALTORS® ASSOCIATION OF EDMONTON. COPYRIGHT 2025 BY THE REALTORS® ASSOCIATION OF EDMONTON. ALL RIGHTS RESERVED.Trademarks are owned or controlled by the Canadian Real Estate Association (CREA) and identify real estate professionals who are members of CREA (REALTOR®, REALTORS®) and/or the quality of services they provide (MLS®, Multiple Listing Service®)

Listing information last updated on August 3rd, 2025 at 4:17am MDT