

# \$99,900 - 103 8310 Jasper Avenue, Edmonton

MLS® #E4435828

**\$99,900**

1 Bedroom, 1.00 Bathroom, 624 sqft

Condo / Townhouse on 0.00 Acres

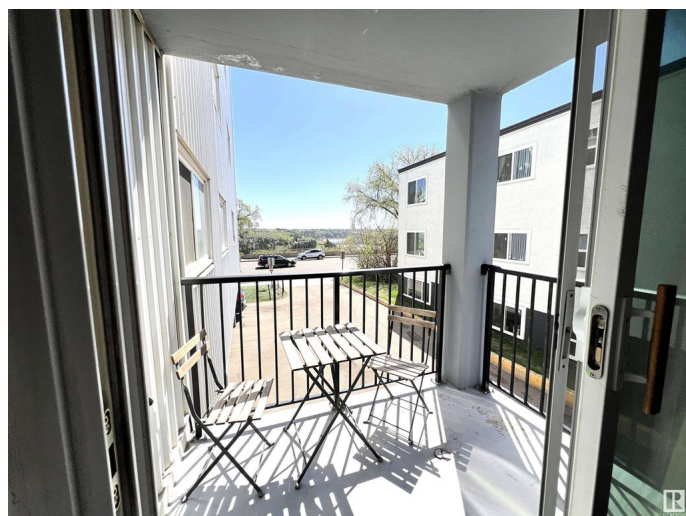
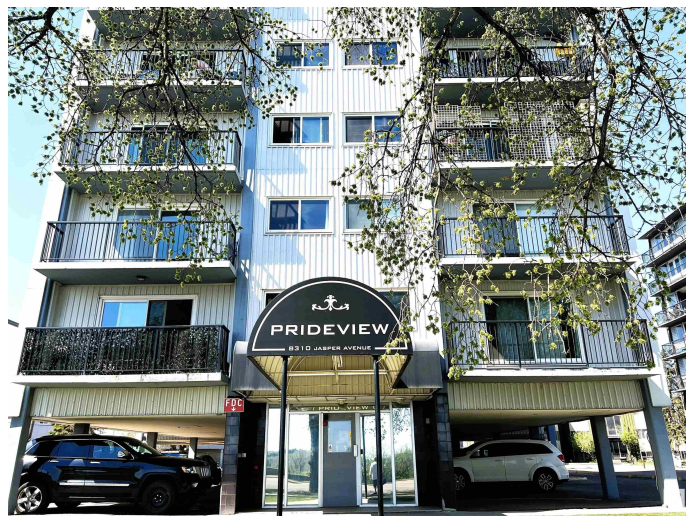
Cromdale, Edmonton, AB

Amazing Location and River Valley View from your 2nd floor balcony in the heart of Edmonton on Jasper Av just blocks from Ada Boulevard, Borden Park and the Stadium. This is perfect for a first time buyer, someone looking to downsize or as a very desirable rental just 7 minutes to the Ice District and Downtown in an area seeing major renewal and development. Many recent upgrades in this functional and open floor plan unit include paint, flooring and countertops. This is move in ready, well kept and fully furnished if the buyer wants! Quiet and well maintained building, all utilities included in fees, comfort and convenience in this ideal retreat. Don't miss the opportunity to own a home that offers location, views and lifestyle!

Built in 1968

## Essential Information

MLS® #	E4435828
Price	\$99,900
Bedrooms	1
Bathrooms	1.00
Full Baths	1
Square Footage	624
Acres	0.00
Year Built	1968



Type	Condo / Townhouse
Sub-Type	Apartment High Rise
Style	Single Level Apartment
Status	Active

### Community Information

Address	103 8310 Jasper Avenue
Area	Edmonton
Subdivision	Cromdale
City	Edmonton
County	ALBERTA
Province	AB
Postal Code	T5H 3S3

### Amenities

Amenities	Parking-Plug-Ins, Storage-In-Suite
Parking	Stall

### Interior

Appliances	Hood Fan, Oven-Microwave, Refrigerator, Stove-Electric
Heating	Baseboard, Hot Water, Natural Gas, Water
# of Stories	8
Stories	1
Has Basement	Yes
Basement	None, No Basement

### Exterior

Exterior	Concrete, Metal
Exterior Features	Back Lane, Golf Nearby, Public Transportation, River Valley View, River View, Shopping Nearby, See Remarks
Roof	See Remarks
Construction	Concrete, Metal
Foundation	Concrete Perimeter

### Additional Information

Date Listed	May 10th, 2025
Days on Market	37
Zoning	Zone 09
Condo Fee	\$568

DATA IS DEEMED RELIABLE BUT IS NOT GUARANTEED ACCURATE BY THE REALTORS® ASSOCIATION OF EDMONTON. COPYRIGHT 2025 BY THE REALTORS® ASSOCIATION OF EDMONTON. ALL RIGHTS RESERVED.Trademarks are owned or controlled by the Canadian Real Estate Association (CREA) and identify real estate professionals who are members of CREA (REALTOR®, REALTORS®) and/or the quality of services they provide (MLS®, Multiple Listing Service®)

Listing information last updated on June 16th, 2025 at 4:02pm MDT