

## \$659,900 - 1247 Calahoo Road, Spruce Grove

MLS® #E4436920

**\$659,900**

5 Bedroom, 3.50 Bathroom, 2,409 sqft

Single Family on 0.00 Acres

Aspen Glen, Spruce Grove, AB

Welcome home to this F/F 2 Storey that is ideally situated in Jesperdale across from a tranquil pond and backing onto trees & green space with walking trails. Upon entry, you are greeted by a grand entrance with soaring open-to-above ceiling. The main floor is an exceptional open-concept layout featuring a contemporary kitchen with white cabinetry, quartz countertops, a large waterfall island, stainless steel appliances and a walk-through pantry, large eating nook, living room with Electric F/P and den. Upstairs includes two bedrooms with a Jack and Jill bathroom, bonus room and laundry. The primary suite has a large vaulted ceiling with a walk in closet and spa like 5 piece ensuite. The fully finished basement adds even more living space with two additional bedrooms, a gym and a stylish 3-piece bathroom. This home was designed for both comfort and entertaining. Right next to the Links Golf course and Walking distance to schools, parks and shopping. Easy access to the city with major roadways close by

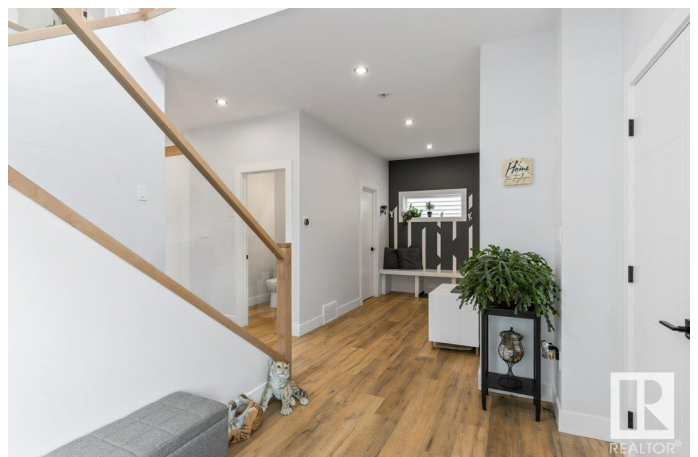
Built in 2022

### Essential Information

MLS® # E4436920

Price \$659,900

Bedrooms 5



|                |                        |
|----------------|------------------------|
| Bathrooms      | 3.50                   |
| Full Baths     | 3                      |
| Half Baths     | 1                      |
| Square Footage | 2,409                  |
| Acres          | 0.00                   |
| Year Built     | 2022                   |
| Type           | Single Family          |
| Sub-Type       | Detached Single Family |
| Style          | 2 Storey               |
| Status         | Active                 |

### Community Information

|             |                   |
|-------------|-------------------|
| Address     | 1247 Calahoo Road |
| Area        | Spruce Grove      |
| Subdivision | Aspen Glen        |
| City        | Spruce Grove      |
| County      | ALBERTA           |
| Province    | AB                |
| Postal Code | T7X 4R5           |

### Amenities

|           |                                                                |
|-----------|----------------------------------------------------------------|
| Amenities | Air Conditioner, Deck, Vaulted Ceiling, Natural Gas BBQ Hookup |
| Parking   | Double Garage Attached                                         |

### Interior

|                   |                                                                                                                                     |
|-------------------|-------------------------------------------------------------------------------------------------------------------------------------|
| Interior Features | ensuite bathroom                                                                                                                    |
| Appliances        | Dishwasher-Built-In, Dryer, Garage Control, Garage Opener, Hood Fan, Oven-Built-In, Oven-Microwave, Refrigerator, Stove-Gas, Washer |
| Heating           | Forced Air-2, Natural Gas                                                                                                           |
| Fireplace         | Yes                                                                                                                                 |
| Fireplaces        | Insert                                                                                                                              |
| Stories           | 3                                                                                                                                   |
| Has Basement      | Yes                                                                                                                                 |
| Basement          | Full, Finished                                                                                                                      |

### Exterior

|                   |                                                                                                                   |
|-------------------|-------------------------------------------------------------------------------------------------------------------|
| Exterior          | Wood, Stone, Vinyl                                                                                                |
| Exterior Features | Backs Onto Park/Trees, Fenced, Golf Nearby, Landscaped, Park/Reserve, Playground Nearby, Schools, Shopping Nearby |

|              |                    |
|--------------|--------------------|
| Roof         | Asphalt Shingles   |
| Construction | Wood, Stone, Vinyl |
| Foundation   | Concrete Perimeter |

**Additional Information**

|                |                |
|----------------|----------------|
| Date Listed    | May 16th, 2025 |
| Days on Market | 17             |
| Zoning         | Zone 91        |

DATA IS DEEMED RELIABLE BUT IS NOT GUARANTEED ACCURATE BY THE REALTORS® ASSOCIATION OF EDMONTON. COPYRIGHT 2025 BY THE REALTORS® ASSOCIATION OF EDMONTON. ALL RIGHTS RESERVED.Trademarks are owned or controlled by the Canadian Real Estate Association (CREA) and identify real estate professionals who are members of CREA (REALTOR®, REALTORS®) and/or the quality of services they provide (MLS®, Multiple Listing Service®)

Listing information last updated on June 2nd, 2025 at 11:48am MDT