

# \$119,900 - N/A, Edmonton

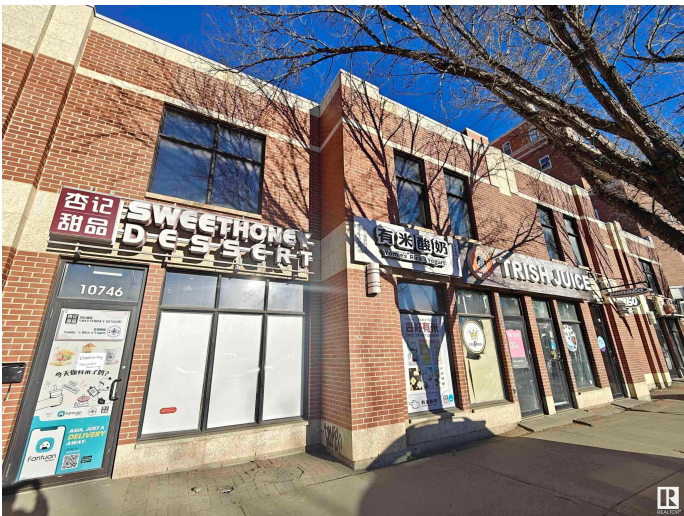
MLS® #E4437442

**\$119,900**

0 Bedroom, 0.00 Bathroom,  
Business on 0.00 Acres

Strathcona, Edmonton, AB

Dual Franchise Dessert Haven on Edmonton's Bustling Whyte Ave!!! Embark on a sweet journey of entrepreneurial success with this rare opportunity to acquire not one but two thriving franchise businesses nestled on the vibrant and lively Whyte Ave in Edmonton. Boasting a prime location in close proximity to the University of Alberta, these dessert destinations have become beloved staples for locals, students, and tourists alike. The businesses are fully equipped and operational, ready for a seamless transition of ownership. everything is in place for you to step in and start reaping the rewards immediately. Don't miss out!



## Essential Information

MLS® #	E4437442
Price	\$119,900
Bathrooms	0.00
Acres	0.00
Type	Business
Status	Active

## Community Information

Address	N/A
Area	Edmonton
Subdivision	Strathcona

City	Edmonton
County	ALBERTA
Province	AB
Postal Code	T6E 2A8

### **Additional Information**

Date Listed	May 20th, 2025
Days on Market	77
Zoning	Zone 15

DATA IS DEEMED RELIABLE BUT IS NOT GUARANTEED ACCURATE BY THE REALTORS® ASSOCIATION OF EDMONTON. COPYRIGHT 2025 BY THE REALTORS® ASSOCIATION OF EDMONTON. ALL RIGHTS RESERVED. Trademarks are owned or controlled by the Canadian Real Estate Association (CREA) and identify real estate professionals who are members of CREA (REALTOR®, REALTORS®) and/or the quality of services they provide (MLS®, Multiple Listing Service®)

Listing information last updated on August 5th, 2025 at 12:03pm MDT