

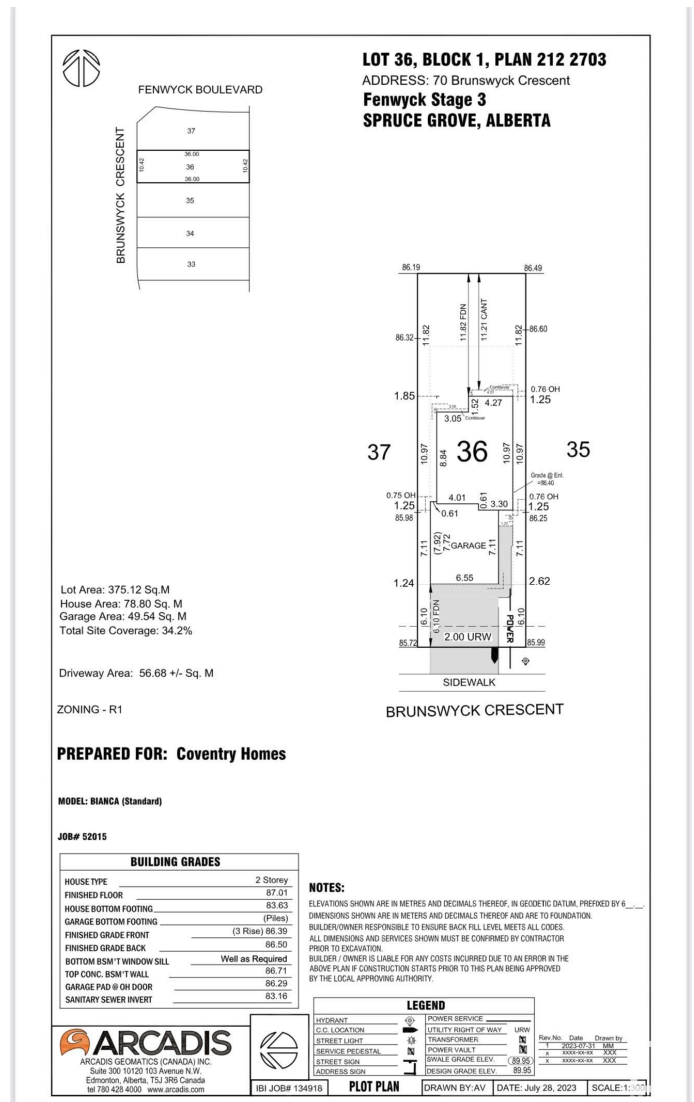
\$189,900 - 70 Brunswyck Crescent, Spruce Grove

\$189,900

0 Bedroom, 0.00 Bathroom,
Single Family on 0.00 Acres

Fenwyck, Spruce Grove, AB

A VERY RARE OPPORTUNITY! 26 POCKET LOT with front double attached garage in FENWYCK. Located in east Spruce Grove, Fenwyck is becoming one of the most sought-after communities in this growing, family-focused city. Spanning 80 acres of preserved forest, Fenwyck offers a peaceful natural setting while still being close to all the conveniences of the city. This family-friendly neighborhood combines modern living with the beauty of the outdoors, making it an ideal place for those looking to invest in their first home or settle into their forever home. This community is conveniently located just 11 minutes away from the City of Edmonton and has direct access to Highway 16A via Pioneer Road.



Essential Information

MLS® #	E4437459
Price	\$189,900
Bathrooms	0.00
Acres	0.00
Type	Single Family
Sub-Type	Vacant Lot/Land
Status	Active

Community Information

Address 70 Brunswyck Crescent

Area	Spruce Grove
Subdivision	Fenwyck
City	Spruce Grove
County	ALBERTA
Province	AB
Postal Code	T7X 0Z1

Exterior

Exterior Features Flat Site, Level Land, No Back Lane, Playground Nearby

Additional Information

Date Listed	May 20th, 2025
Days on Market	27
Zoning	Zone 91

DATA IS DEEMED RELIABLE BUT IS NOT GUARANTEED ACCURATE BY THE REALTORS® ASSOCIATION OF EDMONTON. COPYRIGHT 2025 BY THE REALTORS® ASSOCIATION OF EDMONTON. ALL RIGHTS RESERVED. Trademarks are owned or controlled by the Canadian Real Estate Association (CREA) and identify real estate professionals who are members of CREA (REALTOR®, REALTORS®) and/or the quality of services they provide (MLS®, Multiple Listing Service®)

Listing information last updated on June 16th, 2025 at 7:32pm MDT