

# \$644,900 - 5930 18 St, Rural Leduc County

MLS® #E4437575

**\$644,900**

4 Bedroom, 3.00 Bathroom, 2,113 sqft

Rural on 0.11 Acres

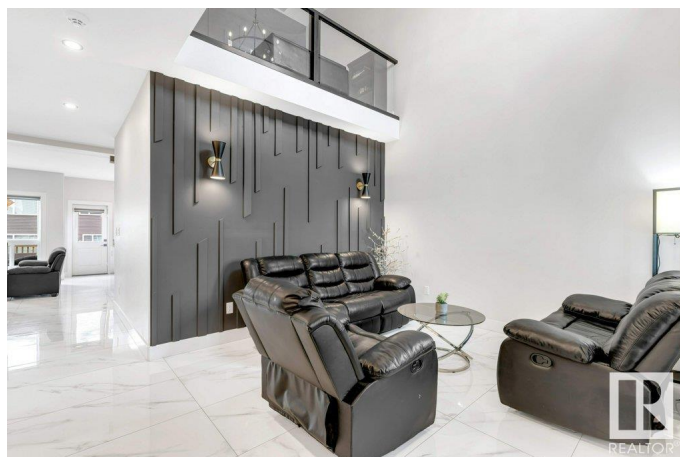
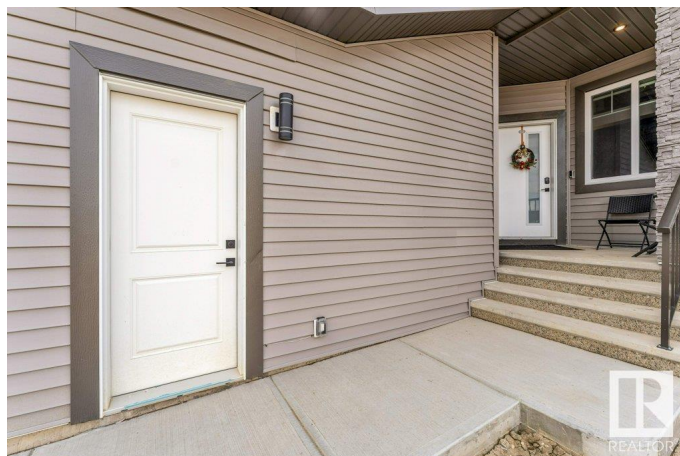
Irvine Creek, Rural Leduc County, AB

Step into luxury with this beautifully upgraded 4-bedroom, 3-bathroom home offering over 2,100 sqft of refined living space on a regular lot. Enjoy upgraded bathrooms, an extended main kitchen, and a fully equipped SPICE KITCHENâ€”perfect for culinary enthusiasts. Designed for modern living, the home features two spacious living rooms and VINYL FLOORING UPSTAIRS. The finished garage includes COLD water tap, drainage, GAS LINE, and a LENNOX GARAGE HEATER for the cold winter. A side pavement leads to a separate entrance to the basement, adding convenience and future potential. The primary bedroom and the bonus room showcases DROPDOWN CEILINGS and ACCENT LIGHTING, while a striking staircase connects to three more generous bedrooms. Located near to a GOLF COURSE and AIRPORT, this home offers luxury, comfort, and prime locationâ€”your dream home awaits!

Built in 2024

## Essential Information

MLS® #	E4437575
Price	\$644,900
Bedrooms	4
Bathrooms	3.00
Full Baths	3



Square Footage	2,113
Acres	0.11
Year Built	2024
Type	Rural
Sub-Type	Detached Single Family
Style	2 Storey
Status	Active

### **Community Information**

Address	5930 18 St
Area	Rural Leduc County
Subdivision	Irvine Creek
City	Rural Leduc County
County	ALBERTA
Province	AB
Postal Code	T4X 3C5

### **Amenities**

Features	Carbon Monoxide Detectors, Ceiling 9 ft., Closet Organizers, Deck, Detectors Smoke, Hot Water Electric, No Animal Home, No Smoking Home, HRV System
----------	---

### **Interior**

Interior Features	ensuite bathroom
Heating	Forced Air-1, Natural Gas
Stories	2
Has Basement	Yes
Basement	Full, Unfinished

### **Exterior**

Exterior	Wood
Exterior Features	Airport Nearby, Creek, Cul-De-Sac, No Back Lane, Public Swimming Pool, Schools, Shopping Nearby
Construction	Wood
Foundation	Concrete Perimeter

### **Additional Information**

Date Listed	May 21st, 2025
Days on Market	27
Zoning	Zone 80

DATA IS DEEMED RELIABLE BUT IS NOT GUARANTEED ACCURATE BY THE REALTORS® ASSOCIATION OF EDMONTON. COPYRIGHT 2025 BY THE REALTORS® ASSOCIATION OF EDMONTON. ALL RIGHTS RESERVED. Trademarks are owned or controlled by the Canadian Real Estate Association (CREA) and identify real estate professionals who are members of CREA (REALTOR®, REALTORS®) and/or the quality of services they provide (MLS®, Multiple Listing Service®)

Listing information last updated on June 16th, 2025 at 9:31pm MDT