

\$229,900 - 10412 28a Avenue, Edmonton

MLS® #E4440574

\$229,900

3 Bedroom, 1.50 Bathroom, 1,054 sqft
Condo / Townhouse on 0.00 Acres

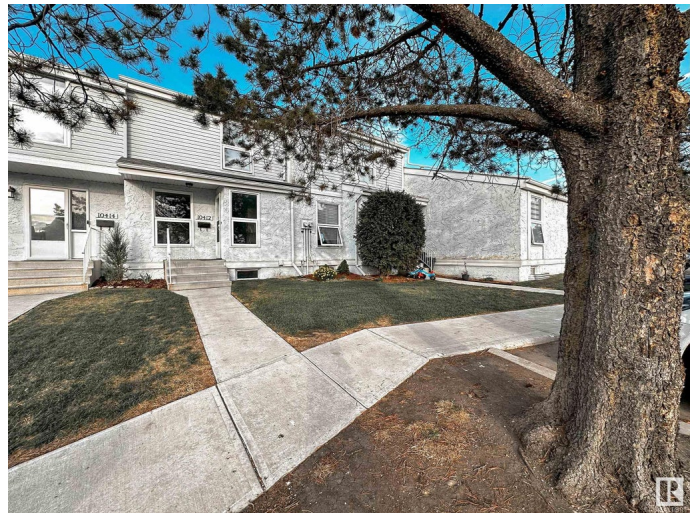
Ermineskin, Edmonton, AB

Southgate Ermineskin community 2 Storey Townhome. The whole house no-carpet. It offers 3 beds, 1.5 bath, partially finished basement, and fenced backyard, located at south Ermineskin. Recent upgrades including Attic Insulation, High efficiency furnace, Two bathrooms, Kitchen and appliances, New painting, New baseboards and trims. The main floor offers functional floorplan, great kitchen offering loads of cabinetry and counter space. Spacious living room and patio door leading to fenced yard. Upstairs are 3 good sized bedrooms & 4pc bathroom. Partly finished basement with lots of storage area. The complex is well maintained, one energized parking stall directly in front of the house, additional parking stalls are available for rent \$15/month. Pets allowed with board registration. Great location, easy access to schools and parks, close to Century Park shopping centre, ETS station, and easy access to main roads/freeways. Come check it out and you won't be disappointed!

Built in 1978

Essential Information

MLS® #	E4440574
Price	\$229,900
Bedrooms	3



Bathrooms	1.50
Full Baths	1
Half Baths	1
Square Footage	1,054
Acres	0.00
Year Built	1978
Type	Condo / Townhouse
Sub-Type	Townhouse
Style	2 Storey
Status	Active

Community Information

Address	10412 28a Avenue
Area	Edmonton
Subdivision	Ermineskin
City	Edmonton
County	ALBERTA
Province	AB
Postal Code	T6J 4J6

Amenities

Amenities	Deck
Parking	Stall

Interior

Appliances	Dishwasher-Built-In, Dryer, Hood Fan, Refrigerator, Stove-Electric, Washer
Heating	Forced Air-1, Natural Gas
Stories	2
Has Basement	Yes
Basement	Full, Partially Finished

Exterior

Exterior	Wood, Vinyl
Exterior Features	Fenced, Landscaped, Playground Nearby, Schools, Shopping Nearby
Roof	Asphalt Shingles
Construction	Wood, Vinyl
Foundation	Concrete Perimeter

Additional Information

Date Listed	June 5th, 2025
Days on Market	12
Zoning	Zone 16
Condo Fee	\$411

DATA IS DEEMED RELIABLE BUT IS NOT GUARANTEED ACCURATE BY THE REALTORS® ASSOCIATION OF EDMONTON. COPYRIGHT 2025 BY THE REALTORS® ASSOCIATION OF EDMONTON. ALL RIGHTS RESERVED. Trademarks are owned or controlled by the Canadian Real Estate Association (CREA) and identify real estate professionals who are members of CREA (REALTOR®, REALTORS®) and/or the quality of services they provide (MLS®, Multiple Listing Service®)

Listing information last updated on June 17th, 2025 at 7:17am MDT