

\$209,900 - 101 10421 42 Avenue, Edmonton

MLS® #E4441379

\$209,900

2 Bedroom, 2.00 Bathroom, 1,189 sqft

Condo / Townhouse on 0.00 Acres

Rideau Park (Edmonton), Edmonton, AB

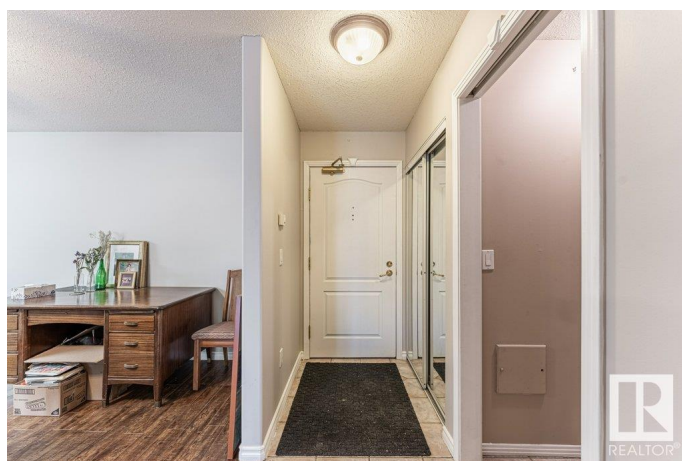
Welcome to Your Perfect Urban Retreat at Whitemud Crossing! This spacious 2-bedroom, 2-bathroom condo offers the perfect blend of comfort, convenience, and style. Ideally located near Calgary Trail and Whitemud Freeway, you'll enjoy quick access to shops, restaurants, transit, and more. Step inside to an open-concept layout featuring a large kitchen with center island and breakfast bar—ideal for casual dining or entertaining. The living room accommodates full-sized furniture with ease and features sliding patio doors that lead to your private outdoor space. The primary suite is a true retreat with a walk-through closet and a full 4-piece ensuite. The second bedroom is generously sized—perfect for a home office or guest room. A second 4-piece bathroom and convenient in-suite laundry round out the unit. Enjoy the perks of secure underground parking with storage, plus a wealth of amenities including a social/party room, pool table, fitness centre, steam room, car wash bay, and more!

Built in 1997

Essential Information

MLS® # E4441379

Price \$209,900



Bedrooms	2
Bathrooms	2.00
Full Baths	2
Square Footage	1,189
Acres	0.00
Year Built	1997
Type	Condo / Townhouse
Sub-Type	Lowrise Apartment
Style	Single Level Apartment
Status	Active

Community Information

Address	101 10421 42 Avenue
Area	Edmonton
Subdivision	Rideau Park (Edmonton)
City	Edmonton
County	ALBERTA
Province	AB
Postal Code	T6J 7C8

Amenities

Amenities	Closet Organizers, Deck, Detectors Smoke, Exercise Room, Parking-Visitor, Party Room
Parking	Heated, Stall, Underground

Interior

Interior Features	ensuite bathroom
Appliances	Dishwasher-Built-In, Dryer, Refrigerator, Stove-Electric, Washer, Window Coverings
Heating	Baseboard, Natural Gas
# of Stories	3
Stories	1
Has Basement	Yes
Basement	None, No Basement

Exterior

Exterior	Wood, Stucco
Exterior Features	Airport Nearby, Fruit Trees/Shrubs, Golf Nearby, Landscaped, Playground Nearby, Public Transportation, Schools, Shopping Nearby

Roof	Asphalt Shingles
Construction	Wood, Stucco
Foundation	Concrete Perimeter

Additional Information

Date Listed	June 9th, 2025
Days on Market	55
Zoning	Zone 16
Condo Fee	\$617

DATA IS DEEMED RELIABLE BUT IS NOT GUARANTEED ACCURATE BY THE REALTORS® ASSOCIATION OF EDMONTON. COPYRIGHT 2025 BY THE REALTORS® ASSOCIATION OF EDMONTON. ALL RIGHTS RESERVED.Trademarks are owned or controlled by the Canadian Real Estate Association (CREA) and identify real estate professionals who are members of CREA (REALTOR®, REALTORS®) and/or the quality of services they provide (MLS®, Multiple Listing Service®)

Listing information last updated on August 3rd, 2025 at 1:47pm MDT