

# **\$1,379,000 - 349 52147 Rge Road 231, Rural Strathcona County**

MLS® #E4441586

**\$1,379,000**

5 Bedroom, 3.50 Bathroom, 2,061 sqft

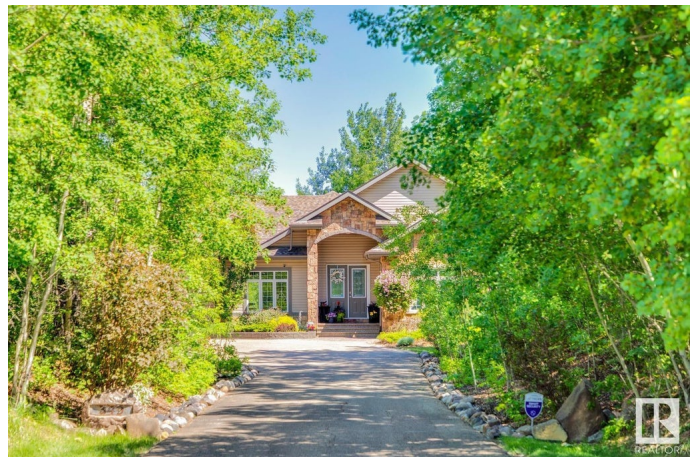
Rural on 2.57 Acres

Waterton Estates, Rural Strathcona County, AB

Combining beauty & elegance! An absolute show stopper in Waterton Estates! Nestled amongst trees, in a private oasis you'll find this superb 2061sf bungalow on 2.57 immaculate acres. Entrance warmly welcomes you into a beautifully appointed formal L/R with pristine hardwood, stunning fireplace w/elegant stone accents. Immaculate, contemporary kitchen featuring white cabinets, S/S appl's ideal island & dining area adorned with floor-to-ceiling windows. Graced w/6 generous BDRM's (3 up 3 down) all streaming w/natural light & 4 baths! Breathtaking 3-season room that evokes a sense of zen tranquility. Awe inspiring laundry rm w/sink, closet & chute! Grand staircase ushers to a spectacular rec rm, elegantly adorned w/luxurious, plush carpeting & abundance of b/i shelving & media space. Ample storage & cold room you won't have issues making use of space! Impeccable triple heated garage w/epoxy floor! Enchanting landscaping, a gardener's dream oasis! CITY WATER, paved driveway, room for a garage or shop! AMAZING

Built in 2006

## **Essential Information**



MLS® #	E4441586
Price	\$1,379,000
Bedrooms	5
Bathrooms	3.50
Full Baths	3
Half Baths	1
Square Footage	2,061
Acres	2.57
Year Built	2006
Type	Rural
Sub-Type	Detached Single Family
Style	Bungalow
Status	Active

### **Community Information**

Address	349 52147 Rge Road 231
Area	Rural Strathcona County
Subdivision	Waterton Estates
City	Rural Strathcona County
County	ALBERTA
Province	AB
Postal Code	T8B 1A4

### **Amenities**

Features	Air Conditioner, Detectors Smoke, Fire Pit, Hot Tub, No Animal Home, No Smoking Home, Sunroom
----------	---

### **Interior**

Interior Features	ensuite bathroom
Heating	Forced Air-1, Natural Gas
Fireplace	Yes
Stories	2
Has Basement	Yes
Basement	Full, Finished

### **Exterior**

Exterior	Wood
Exterior Features	Backs Onto Park/Trees, Fruit Trees/Shrubs, Golf Nearby, Landscaped, Low Maintenance Landscape, Paved Lane, Private Setting, Treed Lot

Construction	Wood
Foundation	Concrete Perimeter

**Additional Information**

Date Listed	June 10th, 2025
Days on Market	7
Zoning	Zone 80

DATA IS DEEMED RELIABLE BUT IS NOT GUARANTEED ACCURATE BY THE REALTORS® ASSOCIATION OF EDMONTON. COPYRIGHT 2025 BY THE REALTORS® ASSOCIATION OF EDMONTON. ALL RIGHTS RESERVED.Trademarks are owned or controlled by the Canadian Real Estate Association (CREA) and identify real estate professionals who are members of CREA (REALTOR®, REALTORS®) and/or the quality of services they provide (MLS®, Multiple Listing Service®)

Listing information last updated on June 17th, 2025 at 1:47am MDT