

\$540,000 - 14214 87 Avenue, Edmonton

MLS® #E4441640

\$540,000

3 Bedroom, 1.50 Bathroom, 2,084 sqft

Single Family on 0.00 Acres

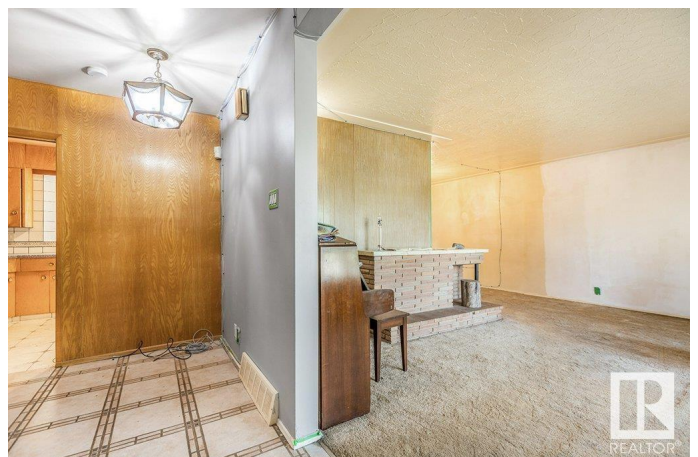
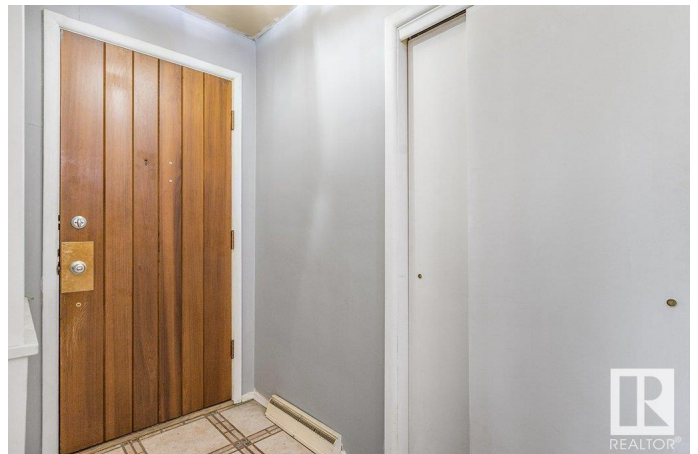
Parkview, Edmonton, AB

Incredible opportunity in prestigious Parkview! Situated on a secondary street across the traffic circle up the road from Buena Vista Park, on a massive 843 Square meter lot, this spacious over 2000 square foot 4-level split offers amazing potential for redevelopment or a stunning rehab. Inside, you'll find beautiful cedar herringbone feature wall and a charming wood-burning fireplace with a brick surround. The home features three bedrooms upstairs with a 4-piece bath, plus a 2-piece bath on the lower level. Some updated windows, 5 year old HWT, and an older but high-efficiency furnace have already been added. The massive pie-shaped lot offers rare space and flexibility in an amazing location—steps to the river valley, minutes to downtown, and surrounded by upscale homes. A rare find with endless potential!

Built in 1958

Essential Information

| | |
|----------------|-----------|
| MLS® # | E4441640 |
| Price | \$540,000 |
| Bedrooms | 3 |
| Bathrooms | 1.50 |
| Full Baths | 1 |
| Half Baths | 1 |
| Square Footage | 2,084 |



| | |
|------------|------------------------|
| Acres | 0.00 |
| Year Built | 1958 |
| Type | Single Family |
| Sub-Type | Detached Single Family |
| Style | 4 Level Split |
| Status | Active |

Community Information

| | |
|-------------|-----------------|
| Address | 14214 87 Avenue |
| Area | Edmonton |
| Subdivision | Parkview |
| City | Edmonton |
| County | ALBERTA |
| Province | AB |
| Postal Code | T5R 4E2 |

Amenities

| | |
|----------------|---|
| Amenities | On Street Parking, Vinyl Windows, See Remarks |
| Parking Spaces | 2 |
| Parking | Double Garage Detached |

Interior

| | |
|--------------|---------------------------|
| Appliances | None |
| Heating | Forced Air-1, Natural Gas |
| Fireplace | Yes |
| Fireplaces | Brick Facing |
| Stories | 4 |
| Has Basement | Yes |
| Basement | Full, Partially Finished |

Exterior

| | |
|-------------------|---|
| Exterior | Wood, Vinyl |
| Exterior Features | Back Lane, Flat Site, Level Land, Playground Nearby, Schools, Subdividable Lot, See Remarks |
| Roof | Asphalt Shingles |
| Construction | Wood, Vinyl |
| Foundation | Concrete Perimeter |

School Information

| | |
|------------|------------------------|
| Elementary | Parkview School |
| Middle | Laurier Heights School |
| High | Ross Sheppard School |

Additional Information

| | |
|-------------|-----------------|
| Date Listed | June 11th, 2025 |
|-------------|-----------------|

| | |
|----------------|---|
| Days on Market | 6 |
|----------------|---|

| | |
|--------|---------|
| Zoning | Zone 10 |
|--------|---------|

DATA IS DEEMED RELIABLE BUT IS NOT GUARANTEED ACCURATE BY THE REALTORS® ASSOCIATION OF EDMONTON. COPYRIGHT 2025 BY THE REALTORS® ASSOCIATION OF EDMONTON. ALL RIGHTS RESERVED. Trademarks are owned or controlled by the Canadian Real Estate Association (CREA) and identify real estate professionals who are members of CREA (REALTOR®, REALTORS®) and/or the quality of services they provide (MLS®, Multiple Listing Service®)

Listing information last updated on June 17th, 2025 at 4:17am MDT