

\$499,000 - 8034 Kiriak Link, Edmonton

MLS® #E4442330

\$499,000

3 Bedroom, 2.50 Bathroom, 1,733 sqft

Single Family on 0.00 Acres

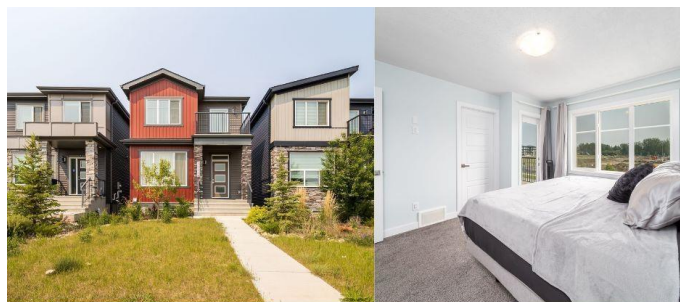
Keswick Area, Edmonton, AB

Step into this stunning 1733 sqft home in the desirable community of Keswick! This open-concept gem features 9ft ceilings, luxury vinyl plank flooring, and a striking feature fireplace wall. The chef-inspired kitchen boasts upgraded cabinets to the ceiling, quartz countertops, stainless steel appliances, and a spacious island—perfect for entertaining. Enjoy the convenience of a double attached garage, separate side entrance, and a cozy deck for outdoor relaxation. Upstairs offers 3 spacious bedrooms, a bonus room, second-floor laundry, and a luxurious 5-piece ensuite with a soaker tub, dual sinks, and tiled shower. The primary bedroom features a private balcony with an amazing view. The unfinished basement provides endless potential for customization. Located near Joey Moss K-9 School, Keswick Pond, playgrounds, and with easy access to the Henday and Airport, this home is perfect for families and future investment!

Built in 2022

Essential Information

| | |
|-----------|-----------|
| MLS® # | E4442330 |
| Price | \$499,000 |
| Bedrooms | 3 |
| Bathrooms | 2.50 |



| | |
|----------------|------------------------|
| Full Baths | 2 |
| Half Baths | 1 |
| Square Footage | 1,733 |
| Acres | 0.00 |
| Year Built | 2022 |
| Type | Single Family |
| Sub-Type | Detached Single Family |
| Style | 2 Storey |
| Status | Active |

Community Information

| | |
|-------------|------------------|
| Address | 8034 Kiriak Link |
| Area | Edmonton |
| Subdivision | Keswick Area |
| City | Edmonton |
| County | ALBERTA |
| Province | AB |
| Postal Code | T6W 4V2 |

Amenities

| | |
|-----------|---|
| Amenities | Off Street Parking, Ceiling 9 ft., No Animal Home, No Smoking Home, Patio |
| Parking | Double Garage Attached |

Interior

| | |
|-------------------|---|
| Interior Features | ensuite bathroom |
| Appliances | Dishwasher-Built-In, Dryer, Microwave Hood Fan, Refrigerator, Stove-Gas, Washer |
| Heating | Forced Air-1, Natural Gas |
| Stories | 2 |
| Has Basement | Yes |
| Basement | Full, Unfinished |

Exterior

| | |
|-------------------|---|
| Exterior | Wood, Vinyl |
| Exterior Features | Airport Nearby, Back Lane, Landscaped, Low Maintenance Landscape, Playground Nearby, Public Transportation, Schools |
| Roof | Asphalt Shingles |
| Construction | Wood, Vinyl |

Foundation Concrete Perimeter

School Information

Elementary Joey Moss School

Additional Information

Date Listed June 13th, 2025

Days on Market 53

Zoning Zone 56

DATA IS DEEMED RELIABLE BUT IS NOT GUARANTEED ACCURATE BY THE REALTORS® ASSOCIATION OF EDMONTON. COPYRIGHT 2025 BY THE REALTORS® ASSOCIATION OF EDMONTON. ALL RIGHTS RESERVED.Trademarks are owned or controlled by the Canadian Real Estate Association (CREA) and identify real estate professionals who are members of CREA (REALTOR®, REALTORS®) and/or the quality of services they provide (MLS®, Multiple Listing Service®)

Listing information last updated on August 5th, 2025 at 7:47pm MDT