

\$425,000 - 14320 128 Street, Edmonton

MLS® #E4443569

\$425,000

3 Bedroom, 2.50 Bathroom, 982 sqft

Single Family on 0.00 Acres

Cumberland, Edmonton, AB

Affordable home ready for a new family! This home features 3 bedrooms and 3 bathrooms. Family friendly location on a quiet street in Cumberland / Skyview. You will love the open feeling of the living room when you walk in with vaulted ceilings and a gas fireplace. Kitchen has a corner panty and space for an eating area. There are 2 bedrooms up including a half bath ensuite off the master bedroom. Downstairs the large windows make the space bright and it is fully finished with a large family room, 2nd gas fireplace, a bedroom, a full bathroom and a large laundry/storage room. The sunny west facing spacious yard has a large deck that has recently been replaced, and updated fencing. Added bonus is Central A/C and high efficiency furnace! Other upgrades over the years include: stainless steel fridge, shingles (approximately 2018) Double garage is heated (heater has not been used and is sold "as is") and insulated. Prime location walking distance to the lake, buses, schools, shopping, restaurants etc.

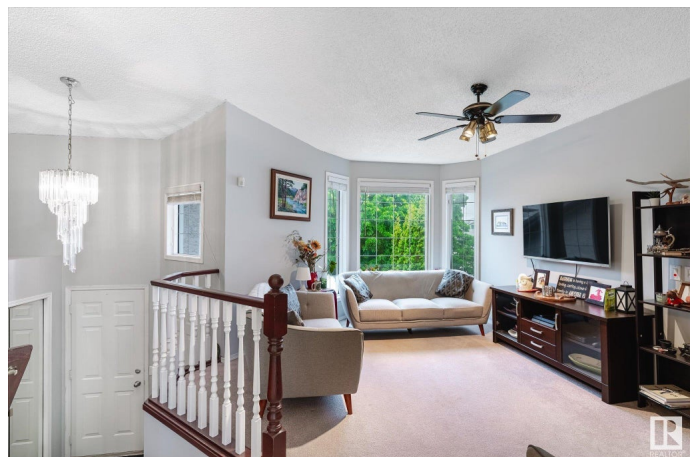
Built in 1994

Essential Information

MLS® # E4443569

Price \$425,000

Bedrooms 3



Bathrooms	2.50
Full Baths	2
Half Baths	1
Square Footage	982
Acres	0.00
Year Built	1994
Type	Single Family
Sub-Type	Detached Single Family
Style	Bi-Level
Status	Active

Community Information

Address	14320 128 Street
Area	Edmonton
Subdivision	Cumberland
City	Edmonton
County	ALBERTA
Province	AB
Postal Code	T6V 1C9

Amenities

Amenities	Off Street Parking, Air Conditioner, Deck, Vaulted Ceiling
Parking Spaces	4
Parking	Double Garage Attached

Interior

Interior Features	ensuite bathroom
Appliances	Air Conditioning-Central, Dishwasher-Built-In, Dryer, Garage Control, Garage Opener, Microwave Hood Fan, Refrigerator, Stove-Electric, Washer, Window Coverings
Heating	Forced Air-1, Natural Gas
Fireplace	Yes
Fireplaces	Corner
Stories	2
Has Basement	Yes
Basement	Full, Finished

Exterior

Exterior	Wood, Stucco
----------	--------------

Exterior Features	Fenced, Flat Site, Landscaped, No Back Lane, Playground Nearby, Public Transportation, Schools, Shopping Nearby
Roof	Asphalt Shingles
Construction	Wood, Stucco
Foundation	Concrete Perimeter

Additional Information

Date Listed	June 20th, 2025
Days on Market	14
Zoning	Zone 27

DATA IS DEEMED RELIABLE BUT IS NOT GUARANTEED ACCURATE BY THE REALTORS® ASSOCIATION OF EDMONTON. COPYRIGHT 2025 BY THE REALTORS® ASSOCIATION OF EDMONTON. ALL RIGHTS RESERVED.Trademarks are owned or controlled by the Canadian Real Estate Association (CREA) and identify real estate professionals who are members of CREA (REALTOR®, REALTORS®) and/or the quality of services they provide (MLS®, Multiple Listing Service®)

Listing information last updated on July 4th, 2025 at 1:17pm MDT