

\$419,900 - 14024 152 Avenue, Edmonton

MLS® #E4445404

\$419,900

4 Bedroom, 2.50 Bathroom, 1,339 sqft

Single Family on 0.00 Acres

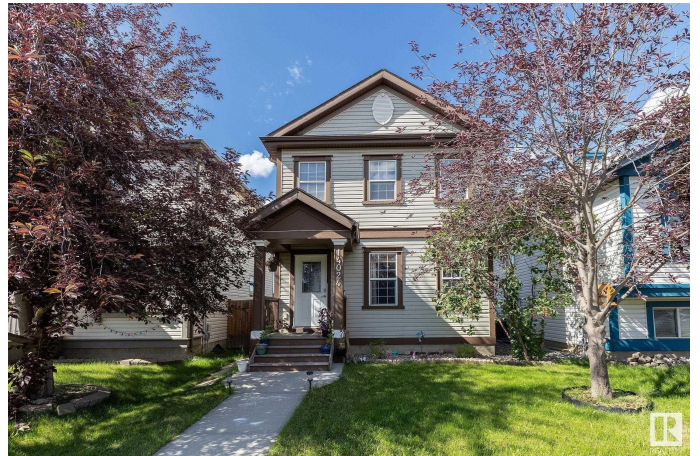
Cumberland, Edmonton, AB

NEW LISTING!. This charming 4-bedroom, 2.5 bathroom home has a terrific location. Backing onto a green space walkway, close to a K-9 school & near by to all amenities! With a covered front entry, this home has an instant warm & welcoming feel! The main floor features a ceramic tile entry, hardwood which flows through the open floor plan. The large kitchen features a raised breakfast bar, ample cabinet & counter space, and mostly newer appliances. The second level features a large primary bedroom with a walk-in closet, two additional bedrooms & bright, main bathroom with a jetted corner tub & shower. The basement features a 4th bedroom and a full bathroom. The back door leads to a tranquil & inviting backyard with a walkway to the double, insulated & heated garage. This move-in-ready home also includes central A/C.

Built in 2003

Essential Information

MLS® #	E4445404
Price	\$419,900
Bedrooms	4
Bathrooms	2.50
Full Baths	2
Half Baths	1
Square Footage	1,339



Acres	0.00
Year Built	2003
Type	Single Family
Sub-Type	Detached Single Family
Style	2 Storey
Status	Active

Community Information

Address	14024 152 Avenue
Area	Edmonton
Subdivision	Cumberland
City	Edmonton
County	ALBERTA
Province	AB
Postal Code	T6V 1T5

Amenities

Amenities	Air Conditioner, Vinyl Windows
Parking	Double Garage Detached, Heated

Interior

Appliances	Air Conditioning-Central, Dishwasher-Built-In, Dryer, Microwave Hood Fan, Refrigerator, Stove-Electric, Washer, Garage Heater
Heating	Forced Air-1, Natural Gas
Stories	3
Has Basement	Yes
Basement	Full, Partially Finished

Exterior

Exterior	Wood, Vinyl
Exterior Features	Back Lane, Fenced, Landscaped, Playground Nearby, Private Setting, Public Transportation, Schools, Shopping Nearby
Roof	Asphalt Shingles
Construction	Wood, Vinyl
Foundation	Concrete Perimeter

Additional Information

Date Listed	July 2nd, 2025
Days on Market	7

Zoning

Zone 27

DATA IS DEEMED RELIABLE BUT IS NOT GUARANTEED ACCURATE BY THE REALTORS® ASSOCIATION OF EDMONTON. COPYRIGHT 2025 BY THE REALTORS® ASSOCIATION OF EDMONTON. ALL RIGHTS RESERVED. Trademarks are owned or controlled by the Canadian Real Estate Association (CREA) and identify real estate professionals who are members of CREA (REALTOR®, REALTORS®) and/or the quality of services they provide (MLS®, Multiple Listing Service®)

Listing information last updated on July 9th, 2025 at 5:02pm MDT