

\$224,900 - 111 5280 Terwillegar Boulevard, Edmonton

MLS® #E4449814

\$224,900

2 Bedroom, 2.00 Bathroom, 872 sqft
Condo / Townhouse on 0.00 Acres

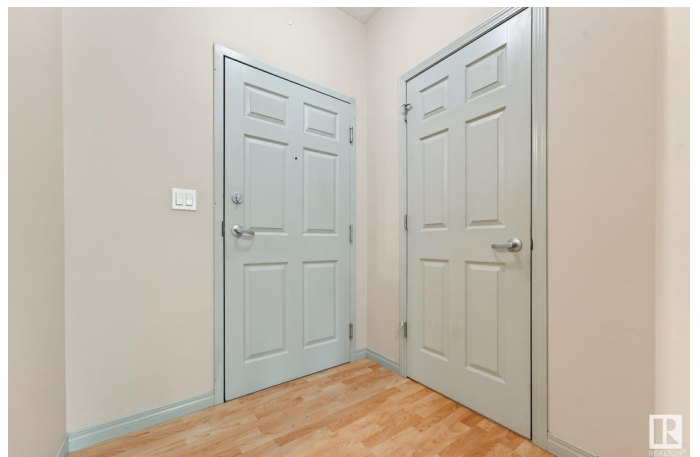
Terwillegar Towne, Edmonton, AB

Welcome to Osheanna Condo, nestled in the desirable community of Terwillegar! This well-maintained 2-bedroom unit offers a bright and functional layout, featuring a cozy fireplace in the living room and a spacious primary suite complete with a walk-in closet and private ensuite. Additional highlights include underground parking, a separate storage unit, and a convenient location just steps from parks, walking trails, and only minutes from the Anthony Henday. Whether you're a first-time buyer, downsizer, or investor, this home offers the perfect blend of comfort and convenience in a sought-after neighborhood.

Built in 2005

Essential Information

MLS® #	E4449814
Price	\$224,900
Bedrooms	2
Bathrooms	2.00
Full Baths	2
Square Footage	872
Acres	0.00
Year Built	2005
Type	Condo / Townhouse
Sub-Type	Lowrise Apartment



Style Multi Level Apartment
Status Active

Community Information

Address 111 5280 Terwillegar Boulevard
Area Edmonton
Subdivision Terwillegar Towne
City Edmonton
County ALBERTA
Province AB
Postal Code T6R 3T9

Amenities

Amenities No Animal Home, Parking-Visitor, Patio, Recreation Room/Centre
Parking Underground

Interior

Interior Features ensuite bathroom
Appliances Dishwasher-Built-In, Dryer, Refrigerator, Stove-Electric, Washer, Window Coverings
Heating Forced Air-1, Natural Gas
Fireplace Yes
Fireplaces Mantel
of Stories 4
Stories 4
Has Basement Yes
Basement None, No Basement

Exterior

Exterior Wood, Brick, Vinyl
Exterior Features Picnic Area, Playground Nearby, Public Transportation, Schools, Shopping Nearby
Roof Asphalt Shingles
Construction Wood, Brick, Vinyl
Foundation Concrete Perimeter

Additional Information

Date Listed July 25th, 2025
Days on Market 8

Zoning	Zone 14
HOA Fees	138
HOA Fees Freq.	Annually
Condo Fee	\$499

DATA IS DEEMED RELIABLE BUT IS NOT GUARANTEED ACCURATE BY THE REALTORS® ASSOCIATION OF EDMONTON. COPYRIGHT 2025 BY THE REALTORS® ASSOCIATION OF EDMONTON. ALL RIGHTS RESERVED. Trademarks are owned or controlled by the Canadian Real Estate Association (CREA) and identify real estate professionals who are members of CREA (REALTOR®, REALTORS®) and/or the quality of services they provide (MLS®, Multiple Listing Service®)

Listing information last updated on August 2nd, 2025 at 7:32pm MDT