

\$484,900 - 42 Dundas Place, St. Albert

MLS® #E4450937

\$484,900

3 Bedroom, 3.00 Bathroom, 1,076 sqft

Single Family on 0.00 Acres

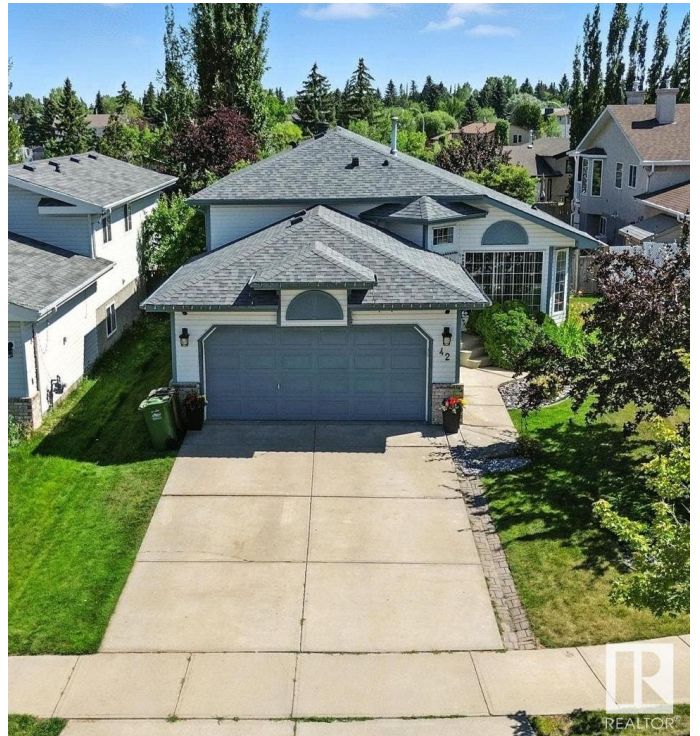
Deer Ridge (St. Albert), St. Albert, AB

This Beautiful 2045 sq ft (combined total living space) 4-level split with attached 2-car garage sits on a park like LARGE 613 Sq M lot and is nestled into the quiet cul-de-sac of Dundas Place!! This beautiful home boast 2 large bedrooms and 2 baths on the top floor, living room and adjacent eat-in kitchen with vaulted ceiling, large sit-up island with Corian countertops, stainless steel appliances and beautiful cabinetry. Step onto a large composite deck with an expansive tree'd and private back yard that is landscaped perfectly! Loads of room for kids to play and shed for storage! The lower level of the home has a gas fireplace, living area and another large bedroom with a full bath. The basement level has another large living area and adjacent laundry room with fridge and storage counter to fold laundry. New hot water tank, Roof was done in 2020! Close to all the schools, shopping and quick access to Ray Gibbon! A must see!

Built in 1996

Essential Information

MLS® #	E4450937
Price	\$484,900
Bedrooms	3
Bathrooms	3.00



Full Baths	3
Square Footage	1,076
Acres	0.00
Year Built	1996
Type	Single Family
Sub-Type	Detached Single Family
Style	4 Level Split
Status	Active

Community Information

Address	42 Dundas Place
Area	St. Albert
Subdivision	Deer Ridge (St. Albert)
City	St. Albert
County	ALBERTA
Province	AB
Postal Code	T8N 6C8

Amenities

Amenities	Deck, Hot Water Natural Gas, No Smoking Home, Vaulted Ceiling
Parking	Double Garage Attached

Interior

Interior Features	ensuite bathroom
Appliances	Dishwasher-Built-In, Dryer, Fan-Ceiling, Garage Control, Garage Opener, Microwave Hood Fan, Refrigerator, Storage Shed, Stove-Electric, Washer, Window Coverings
Heating	Forced Air-1, Natural Gas
Fireplace	Yes
Fireplaces	Mantel
Stories	4
Has Basement	Yes
Basement	Full, Finished

Exterior

Exterior	Wood, Brick, Vinyl
Exterior Features	Landscaped, Playground Nearby, Public Transportation, Schools, Shopping Nearby, Treed Lot
Roof	Asphalt Shingles

Construction	Wood, Brick, Vinyl
Foundation	Concrete Perimeter

School Information

Elementary	JJ Nearing/Muriel Martin
High	Bellrose School

Additional Information

Date Listed	August 1st, 2025
Days on Market	1
Zoning	Zone 24

DATA IS DEEMED RELIABLE BUT IS NOT GUARANTEED ACCURATE BY THE REALTORS® ASSOCIATION OF EDMONTON. COPYRIGHT 2025 BY THE REALTORS® ASSOCIATION OF EDMONTON. ALL RIGHTS RESERVED.Trademarks are owned or controlled by the Canadian Real Estate Association (CREA) and identify real estate professionals who are members of CREA (REALTOR®, REALTORS®) and/or the quality of services they provide (MLS®, Multiple Listing Service®)

Listing information last updated on August 2nd, 2025 at 4:32pm MDT