

# \$699,900 - 73 52059 Range Road 220, Rural Strathcona County

MLS® #E4454662

**\$699,900**

2 Bedroom, 1.50 Bathroom, 1,582 sqft

Rural on 0.17 Acres

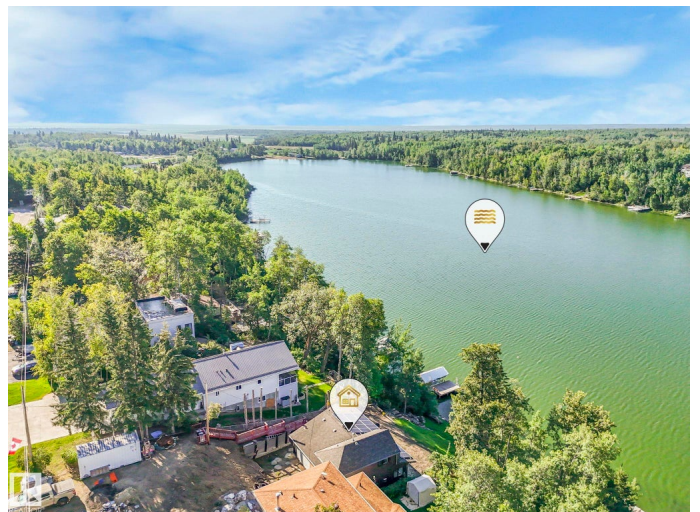
Half Moon Estates (Strathcona), Rural Strathcona County, AB

A stunning waterfront property located on the shores of Half Moon Lake. This 2 bedroom plus flex space home has been masterfully upgraded. In floor heating throughout, 2 gas fireplaces, upgraded insulation, vaulted open beam main living area, Rehau tilt and turn windows, Schuco sliding patio door and absolutely impeccable lake views. The master suite sits alone on the upper level and has plenty of room for furniture. It includes a luxurious ensuite with large walk in shower. Solar panels, Armour Side metal siding and Lindab gutters are gorgeous and practical additions to the exterior. The outdoors await with skating, hiking, snowmobiling and water sports. Plenty of room to park your vehicles and toys. This property is ready for someone to see it through completion.

Built in 1961

## Essential Information

MLS® #	E4454662
Price	\$699,900
Bedrooms	2
Bathrooms	1.50
Full Baths	1



Half Baths	1
Square Footage	1,582
Acres	0.17
Year Built	1961
Type	Rural
Sub-Type	Detached Single Family
Style	1 and Half Storey
Status	Active

### Community Information

Address	73 52059 Range Road 220
Area	Rural Strathcona County
Subdivision	Half Moon Estates (Strathcona)
City	Rural Strathcona County
County	ALBERTA
Province	AB
Postal Code	T8E 1B9

### Amenities

Features	Detectors Smoke
----------	-----------------

### Interior

Interior Features	ensuite bathroom
Heating	In Floor Heat System, Electric, Natural Gas
Stories	2
Has Basement	Yes
Basement	None, No Basement

### Exterior

Exterior	Wood
Exterior Features	Boating, Lake View, Waterfront Property
Construction	Wood
Foundation	Slab

### Additional Information

Date Listed	August 25th, 2025
Days on Market	2
Zoning	Zone 83

DATA IS DEEMED RELIABLE BUT IS NOT GUARANTEED ACCURATE BY THE REALTORS® ASSOCIATION OF

EDMONTON. COPYRIGHT 2025 BY THE REALTORS® ASSOCIATION OF EDMONTON. ALL RIGHTS RESERVED.Trademarks are owned or controlled by the Canadian Real Estate Association (CREA) and identify real estate professionals who are members of CREA (REALTOR®, REALTORS®) and/or the quality of services they provide (MLS®, Multiple Listing Service®)

Listing information last updated on August 27th, 2025 at 5:47pm MDT