

\$650,000 - 1 Kingsbury Circle, Spruce Grove

MLS® #E4454742

\$650,000

2 Bedroom, 2.00 Bathroom, 1,511 sqft

Single Family on 0.00 Acres

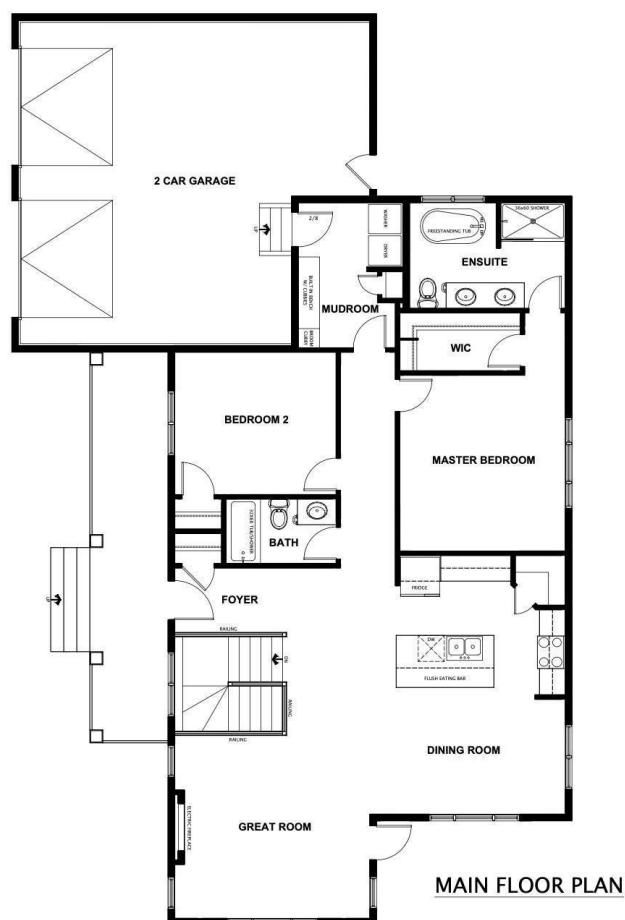
Kenton, Spruce Grove, AB

5 Things to Love About This Home 1) Charming Design – This brand-new bungalow offers a welcoming front porch, open-concept layout, and stylish electric fireplace. 2) Dream Kitchen – Featuring a spacious island with breakfast bar, corner pantry, and seamless flow into dining and living areas. 3) Main Floor Retreat – The primary bedroom includes a walk-in closet and spa-like 5pc ensuite, plus a second bedroom and full bath on the main. 4) Smart Functionality – Mudroom/laundry with garage access, garage floor drain, and a back door from garage to yard for convenience. 5) Fantastic Location – Situated on a very large corner lot, steps to mailbox access, and close to schools, shopping, and everyday amenities. *Photos are representative*

Built in 2025

Essential Information

MLS® #	E4454742
Price	\$650,000
Bedrooms	2
Bathrooms	2.00
Full Baths	2
Square Footage	1,511
Acres	0.00
Year Built	2025



Type	Single Family
Sub-Type	Detached Single Family
Style	Bungalow
Status	Active

Community Information

Address	1 Kingsbury Circle
Area	Spruce Grove
Subdivision	Kenton
City	Spruce Grove
County	ALBERTA
Province	AB
Postal Code	T7X 0C9

Amenities

Amenities	Exterior Walls- 2"x6", Front Porch, No Animal Home, No Smoking Home
Parking	Double Garage Attached

Interior

Interior Features	ensuite bathroom
Appliances	Dishwasher-Built-In, Garage Control, Garage Opener, Microwave Hood Fan, Refrigerator, Stove-Electric
Heating	Forced Air-1, Natural Gas
Fireplace	Yes
Fireplaces	Insert
Stories	1
Has Basement	Yes
Basement	Full, Unfinished

Exterior

Exterior	Wood, Vinyl
Exterior Features	Corner Lot, Park/Reserve, Playground Nearby, Schools, Shopping Nearby
Roof	Asphalt Shingles
Construction	Wood, Vinyl
Foundation	Concrete Perimeter

Additional Information

Date Listed	August 26th, 2025
-------------	-------------------

Days on Market 1

Zoning Zone 91

DATA IS DEEMED RELIABLE BUT IS NOT GUARANTEED ACCURATE BY THE REALTORS® ASSOCIATION OF EDMONTON. COPYRIGHT 2025 BY THE REALTORS® ASSOCIATION OF EDMONTON. ALL RIGHTS RESERVED. Trademarks are owned or controlled by the Canadian Real Estate Association (CREA) and identify real estate professionals who are members of CREA (REALTOR®, REALTORS®) and/or the quality of services they provide (MLS®, Multiple Listing Service®)

Listing information last updated on August 27th, 2025 at 5:02pm MDT