

\$265,000 - 251 Range Road 20, Rural Parkland County

MLS® #E4454783

\$265,000

1 Bedroom, 1.00 Bathroom, 912 sqft

Rural on 0.18 Acres

Spring Lake, Rural Parkland County, AB

Discover your own sanctuary tucked away in the highly sought-after community of Spring Lake. This cozy 4-season retreat has 1-bedroom, 1-bathroom, and is an oasis for the soul offering the perfect blend of comfort and nature. Hideaway from the hustle and bustle while being a short drive to Stony Plain. Surrounded by mature trees makes this setting the perfect place to recharge, reconnect, and breathe. Step inside to a welcoming interior that's perfect for year-round living or a weekend getaway. An open layout and thoughtful design maximizes the space while creating a warm and inviting atmosphere with large windows allowing natural light to spill in. Outside, you'll enjoy the true beauty of country living with access to Spring Lake's lakefront and resort lifestyle. Perfect for paddleboarding, a pontoon, kayaking, swimming, etc. Whether you're looking for a full-time residence, an investment for short or long-term tenants, or a country cabin, this home is a slice of paradise waiting for you!

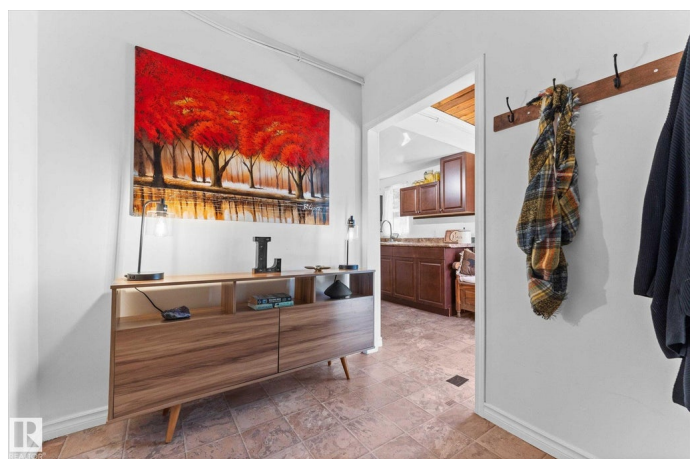
Built in 1963

Essential Information

MLS® # E4454783

Price \$265,000

Bedrooms 1



Bathrooms	1.00
Full Baths	1
Square Footage	912
Acres	0.18
Year Built	1963
Type	Rural
Sub-Type	Detached Single Family
Style	Bungalow
Status	Active

Community Information

Address	251 Range Road 20
Area	Rural Parkland County
Subdivision	Spring Lake
City	Rural Parkland County
County	ALBERTA
Province	AB
Postal Code	T7Z 2V2

Amenities

Features	Off Street Parking, Fire Pit, Front Porch, Lake Privileges, No Smoking Home
----------	---

Interior

Heating	Baseboard, Wood Stove, Electric, Wood
Fireplace	Yes
Stories	1
Has Basement	Yes
Basement	None, No Basement

Exterior

Exterior	Wood
Exterior Features	Backs Onto Park/Trees, Beach Access, Boating, Fenced, Lake Access Property, Low Maintenance Landscape, Playground Nearby, Private Fishing, Schools
Construction	Wood
Foundation	Block, Brick, Stone

Additional Information

Date Listed	August 26th, 2025
-------------	-------------------

Days on Market 1

Zoning Zone 94

DATA IS DEEMED RELIABLE BUT IS NOT GUARANTEED ACCURATE BY THE REALTORS® ASSOCIATION OF EDMONTON. COPYRIGHT 2025 BY THE REALTORS® ASSOCIATION OF EDMONTON. ALL RIGHTS RESERVED. Trademarks are owned or controlled by the Canadian Real Estate Association (CREA) and identify real estate professionals who are members of CREA (REALTOR®, REALTORS®) and/or the quality of services they provide (MLS®, Multiple Listing Service®)

Listing information last updated on August 27th, 2025 at 5:47pm MDT