

\$368,900 - 302 7510 89 Street, Edmonton

MLS® #E4455631

\$368,900

2 Bedroom, 2.00 Bathroom, 1,277 sqft
Condo / Townhouse on 0.00 Acres

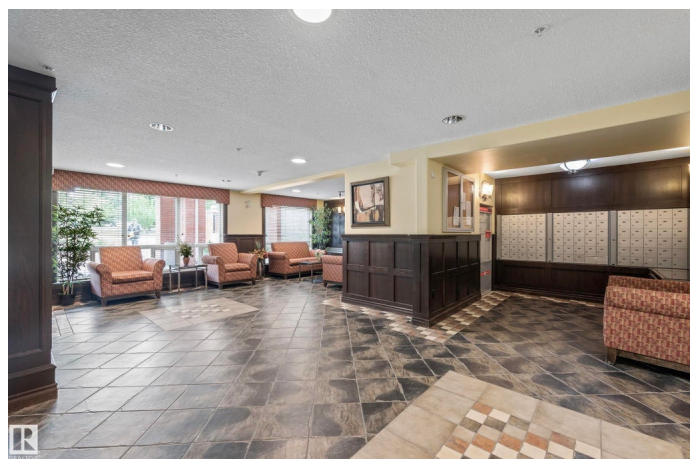
Avonmore, Edmonton, AB

Embraced by the natural beauty of Mill Creek Ravine, this bright and spacious 2 bed (or 1 bed & den), 2 bath apartment-style condo at The Conservatory offers a truly unique living experience. Bathed in natural light from expansive windows, the open-concept floor plan is welcoming, versatile, and functional – featuring a large kitchen with a raised island, ample cabinetry, lots of counter space and a spacious pantry. Recent updates include a brand new microwave hood fan and dishwasher, plus fresh paint throughout – making this home completely move-in ready. This well-managed 18+ building offers more than just a home – it’s a lifestyle. Residents enjoy heated underground parking with a storage cage, a fitness room, social lounge, quiet library, and a rooftop terrace with panoramic views of the city skyline. Step outside and find yourself surrounded by trees, scenic trails, and the peaceful beauty of Mill Creek Ravine. If you're seeking calm, community, convenience and a wonderful home, this is a must to see.

Built in 2005

Essential Information

MLS® #	E4455631
Price	\$368,900



Bedrooms	2
Bathrooms	2.00
Full Baths	2
Square Footage	1,277
Acres	0.00
Year Built	2005
Type	Condo / Townhouse
Sub-Type	Lowrise Apartment
Style	Single Level Apartment
Status	Active

Community Information

Address	302 7510 89 Street
Area	Edmonton
Subdivision	Avonmore
City	Edmonton
County	ALBERTA
Province	AB
Postal Code	T6C 0X5

Amenities

Amenities	Air Conditioner, Exercise Room, Guest Suite, No Smoking Home, Parking-Visitor, Secured Parking, Storage-In-Suite, Storage Cage, Rooftop Deck/Patio
Parking Spaces	2
Parking	Tandem, Underground

Interior

Interior Features	ensuite bathroom
Appliances	Dishwasher-Built-In, Dryer, Microwave Hood Fan, Refrigerator, Stove-Electric, Washer, Window Coverings
Heating	Heat Pump, Natural Gas
# of Stories	4
Stories	1
Has Basement	Yes
Basement	None, No Basement

Exterior

Exterior	Wood, Brick, Stucco
----------	---------------------

Exterior Features	Landscaped, Playground Nearby, Private Setting, Public Transportation, Shopping Nearby, See Remarks
Roof	Asphalt Shingles
Construction	Wood, Brick, Stucco
Foundation	Concrete Perimeter

Additional Information

Date Listed	September 2nd, 2025
Days on Market	67
Zoning	Zone 17
Condo Fee	\$730

DATA IS DEEMED RELIABLE BUT IS NOT GUARANTEED ACCURATE BY THE REALTORS® ASSOCIATION OF EDMONTON. COPYRIGHT 2025 BY THE REALTORS® ASSOCIATION OF EDMONTON. ALL RIGHTS RESERVED. Trademarks are owned or controlled by the Canadian Real Estate Association (CREA) and identify real estate professionals who are members of CREA (REALTOR®, REALTORS®) and/or the quality of services they provide (MLS®, Multiple Listing Service®)

Listing information last updated on November 8th, 2025 at 6:02am MST