

Courtesy Of Patti Holtz Of RE/MAX Elite

# \$799,000 - 81 53221 Rge Road 223, Rural Strathcona County

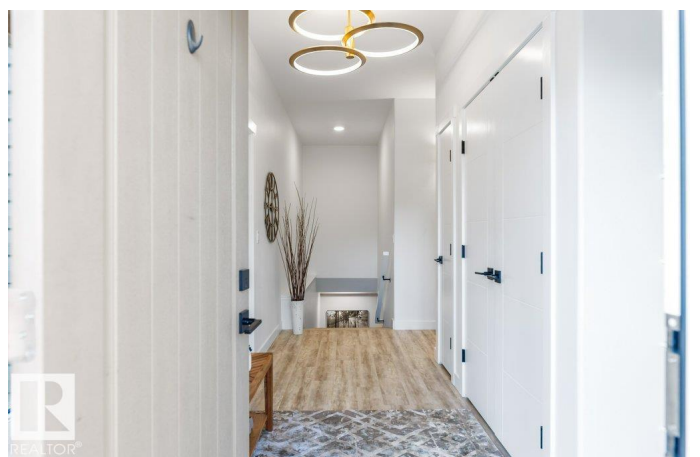
MLS® #E4458218

**\$799,000**

3 Bedroom, 3.00 Bathroom, 1,481 sqft  
Rural on 2.00 Acres

Queensdale Place South, Rural Strathcona County, AB

Tucked among the trees in Queensdale Place, just 5 min from Sherwood Pk, this stunning bungalow is nestled on a PRIVATE 2 acre lot, featuring 3 bedrms, 3 bathrms, heated DBL attached garage, plus DBL detached garage! The bright, open layout drenches the main floor in natural light. Kitchen includes high end stainless appliances, ample cabinetry, prep island & W/I pantry. Enjoy the large dining area w/ views to your spacious living room-perfect for gathering. King-sized primary suite boasts a WIC & 3pc ensuite w/ spa-inspired shower. A 2nd bedrm & 4pc bath complete the main floor. Downstairs, the basement features a family room, 3rd bedrm, 4pc bath, laundry, storage & a flex space (could easily become a 4th bedrm). Enjoy peace & privacy as you relax on your covered veranda w/ composite deck. Upgrades incl \$60K state of the art septic; concrete driveways for both garages. With a groomed trail inside your fenced property, youâ€™™ LOVE to quad & bike! All just minutes from schools, parks & shopping! 10/10



Built in 2021

## Essential Information

MLS® #	E4458218
Price	\$799,000
Bedrooms	3
Bathrooms	3.00
Full Baths	3
Square Footage	1,481
Acres	2.00
Year Built	2021
Type	Rural
Sub-Type	Detached Single Family
Style	Bungalow
Status	Active

### **Community Information**

Address	81 53221 Rge Road 223
Area	Rural Strathcona County
Subdivision	Queensdale Place South
City	Rural Strathcona County
County	ALBERTA
Province	AB
Postal Code	T8E 2K1

### **Amenities**

Features	Ceiling 9 ft., Deck, Detectors Smoke, Front Porch, No Animal Home, No Smoking Home, Natural Gas BBQ Hookup
----------	--

### **Interior**

Interior Features	ensuite bathroom
Heating	Forced Air-1, Natural Gas
Stories	2
Has Basement	Yes
Basement	Full, Finished

### **Exterior**

Exterior	Wood
Exterior Features	Level Land, Low Maintenance Landscape, Private Setting
Construction	Wood
Foundation	Concrete Perimeter

### **Additional Information**

Date Listed September 17th, 2025

Days on Market 1

Zoning Zone 60

DATA IS DEEMED RELIABLE BUT IS NOT GUARANTEED ACCURATE BY THE REALTORS® ASSOCIATION OF EDMONTON. COPYRIGHT 2025 BY THE REALTORS® ASSOCIATION OF EDMONTON. ALL RIGHTS RESERVED. Trademarks are owned or controlled by the Canadian Real Estate Association (CREA) and identify real estate professionals who are members of CREA (REALTOR®, REALTORS®) and/or the quality of services they provide (MLS®, Multiple Listing Service®)

Listing information last updated on September 18th, 2025 at 2:02pm MDT