

Courtesy Of Leah-Mel B Icalla Of MaxWell Polaris

\$399,000 - 2082 Price Landing, Edmonton

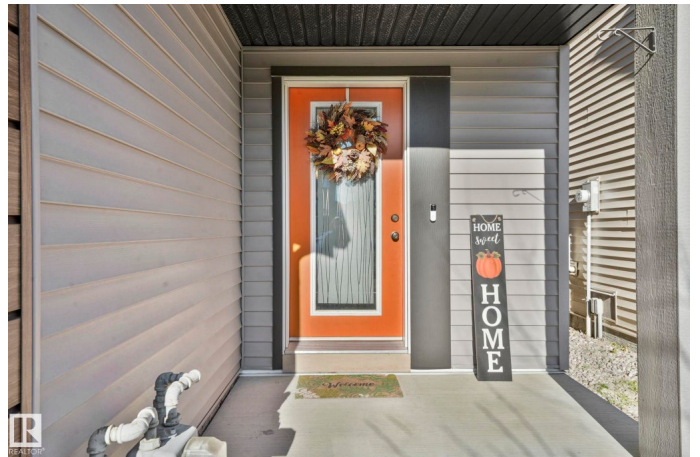
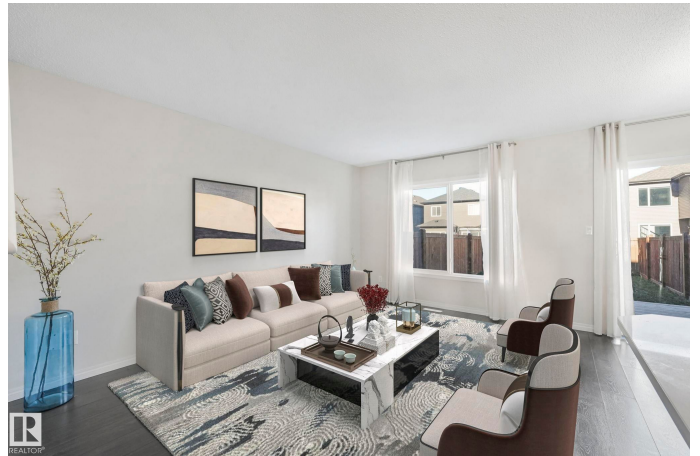
MLS® #E4464154

\$399,000

3 Bedroom, 2.50 Bathroom, 1,379 sqft
Single Family on 0.00 Acres

Paisley, Edmonton, AB

Live the Paisley lifestyle -- scenic ravines, modern architecture, & a vibrant community, the perfect setting for home & family. This ORIGINAL-OWNER, NEVER-SMOKED IN home is bright, open, & thoughtfully designed, featuring a KITCHEN ISLAND, LARGE LAUNDRY, & a layout ideal for everyday living & entertaining. Enjoy mornings in sunlit spaces, host weekend barbecues in the FENCED yard w/sizeable DECK, or take peaceful walks along the community's trails, water features, & nearby parks while soaking in the tranquility of the neighborhood. Included appliances are dishwasher, dryer, hood fan, refrigerator, stove, & washer, with a single ATTACHED GARAGE w/ EV CHARGER for convenience - totally handy on those long winter months. With shopping, schools, & the Currents of Windermere close by, plus easy access to Anthony Henday, TRANSIT centre, the AIRPORT, & the future hospital, this home perfectly blends comfort, style, & location for a lifestyle that is ready to enjoy today & built to create memories for years to come.



Built in 2017

Essential Information

MLS® #	E4464154
Price	\$399,000

Bedrooms	3
Bathrooms	2.50
Full Baths	2
Half Baths	1
Square Footage	1,379
Acres	0.00
Year Built	2017
Type	Single Family
Sub-Type	Half Duplex
Style	2 Storey
Status	Active

Community Information

Address	2082 Price Landing
Area	Edmonton
Subdivision	Paisley
City	Edmonton
County	ALBERTA
Province	AB
Postal Code	T6W 3W1

Amenities

Amenities	Detectors Smoke, No Smoking Home
Parking Spaces	2
Parking	Single Garage Attached

Interior

Interior Features	ensuite bathroom
Appliances	Dishwasher-Built-In, Microwave Hood Fan, Refrigerator, Stove-Electric, Washer
Heating	Forced Air-1, Natural Gas
Stories	2
Has Basement	Yes
Basement	Full, Unfinished

Exterior

Exterior	Wood, Vinyl
Exterior Features	Landscaped, Park/Reserve, Shopping Nearby
Roof	Asphalt Shingles

Construction	Wood, Vinyl
Foundation	Concrete Perimeter

School Information

Elementary	Steinhauer School
Middle	D.S. MacKenzie School
High	Dr. Anne Anderson School

Additional Information

Date Listed	October 31st, 2025
Days on Market	3
Zoning	Zone 55

DATA IS DEEMED RELIABLE BUT IS NOT GUARANTEED ACCURATE BY THE REALTORS® ASSOCIATION OF EDMONTON. COPYRIGHT 2025 BY THE REALTORS® ASSOCIATION OF EDMONTON. ALL RIGHTS RESERVED. Trademarks are owned or controlled by the Canadian Real Estate Association (CREA) and identify real estate professionals who are members of CREA (REALTOR®, REALTORS®) and/or the quality of services they provide (MLS®, Multiple Listing Service®)

Listing information last updated on November 3rd, 2025 at 1:32am MST